



**INTERNATIONAL  
GEMOLOGICAL  
INSTITUTE**

**ELECTRONIC COPY**

**LABORATORY GROWN  
DIAMOND REPORT**

**LG572331332**

**IGI LABORATORY GROWN  
DIAMOND ID REPORT**

March 28, 2023

IGI Report Number **LG572331332**

**CUT CORNERED RECTANGULAR  
MODIFIED BRILLIANT**

**5.16 X 4.02 X 2.76 MM**

Carat Weight 0.54 CARAT

Color Grade FANCY VIVID ORANGY YELLOW

Clarity Grade VS 1

Polish EXCELLENT

Symmetry VERY GOOD

Fluorescence NONE

Inscription(s) LG572331332

Comments: As Grown - No indication of post-growth treatment. This Laboratory Grown Diamond was created by High Pressure High Temperature (HPHT) growth process.

**LABORATORY GROWN DIAMOND REPORT**

**IGI LABORATORY GROWN DIAMOND IDENTIFICATION REPORT**

March 28, 2023

IGI Report Number LG572331332

Description LABORATORY GROWN DIAMOND

Shape and Cutting Style CUT CORNERED RECTANGULAR MODIFIED BRILLIANT

Measurements 5.16 X 4.02 X 2.76 MM

**GRADING RESULTS**

Carat Weight 0.54 CARAT

Color Grade FANCY VIVID ORANGY YELLOW

Clarity Grade VS 1

**ADDITIONAL GRADING INFORMATION**

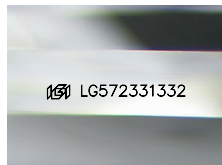
Polish EXCELLENT

Symmetry VERY GOOD

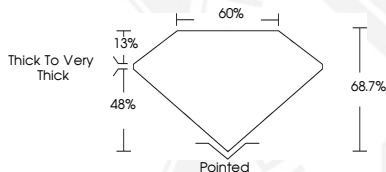
Fluorescence NONE

Inscription(s) LG572331332

Comments: As Grown - No indication of post-growth treatment. This Laboratory Grown Diamond was created by High Pressure High Temperature (HPHT) growth process.



Sample Image Used



**IGI LABORATORY GROWN  
DIAMOND ID REPORT**

March 28, 2023

IGI Report Number **LG572331332**

**CUT CORNERED RECTANGULAR  
MODIFIED BRILLIANT**

**5.16 X 4.02 X 2.76 MM**

Carat Weight 0.54 CARAT

Color Grade FANCY VIVID ORANGY YELLOW

Clarity Grade VS 1

Polish EXCELLENT

Symmetry VERY GOOD

Fluorescence NONE

Inscription(s) LG572331332

Comments: As Grown - No indication of post-growth treatment. This Laboratory Grown Diamond was created by High Pressure High Temperature (HPHT) growth process.

THIS DOCUMENT WAS PRODUCED WITH THE FOLLOWING SECURITY MEASURES: SPECIAL DOCUMENT PAPER, INK SCREENS, WATERMARK, BACKGROUND DESIGN, HOLOGRAM AND OTHER SECURITY FEATURES NOT LISTED AND DO EXCEED DOCUMENT SECURITY INDUSTRY GUIDELINES.

For terms & conditions and to verify this report, please visit [www.igi.org](http://www.igi.org)