



**ELECTRONIC COPY**

## LABORATORY GROWN DIAMOND REPORT

|                         |                             |
|-------------------------|-----------------------------|
| March 29, 2023          |                             |
| IGI Report Number       | LG572331829                 |
| Description             | LABORATORY GROWN<br>DIAMOND |
| Shape and Cutting Style | ROUND BRILLIANT             |
| Measurements            | 6.94 - 6.99 X 4.38 MM       |

## GRADING RESULTS

|               |                                |
|---------------|--------------------------------|
| Carat Weight  | 1.33 CARAT                     |
| Color Grade   | FANCY VIVID BROWNISH<br>YELLOW |
| Clarity Grade | SI 2                           |
| Cut Grade     | EXCELLENT                      |

### ADDITIONAL GRADING INFORMATION

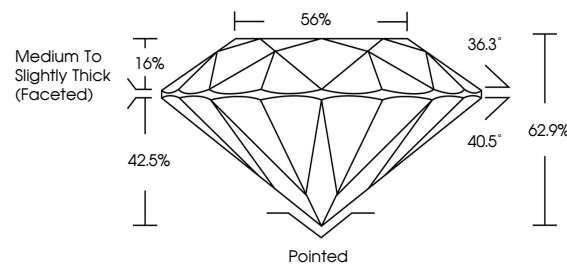
|                |                 |
|----------------|-----------------|
| Polish         | EXCELLENT       |
| Symmetry       | EXCELLENT       |
| Fluorescence   | NONE            |
| Inscription(s) | 151 LG572331829 |

Comments: This Laboratory Grown Diamond was created by Chemical Vapor Deposition (CVD) growth process and may include post-growth treatment.

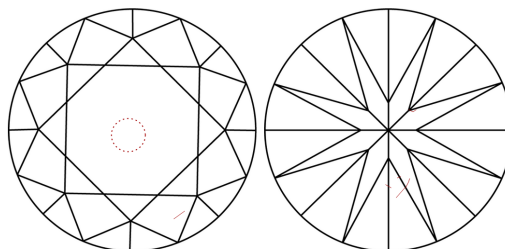
## LABORATORY GROWN DIAMOND REPORT

LG572331829  
Report verification at [igi.org](https://igi.org)

## PROPORTIONS



## CLARITY CHARACTERISTICS



### KEY TO SYMBOLS

Red symbols indicate internal characteristics.  
Green symbols indicate external characteristics.

LABORATORY GROWN  
DIAMOND REPORT

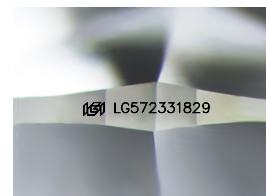
## GRADING SCALES

## CLARITY

| IF                  | VVS <sup>1-2</sup>          | VS <sup>1-2</sup>      | SI <sup>1-2</sup> | I <sup>1-3</sup> |
|---------------------|-----------------------------|------------------------|-------------------|------------------|
| Internally Flawless | Very Very Slightly Included | Very Slightly Included | Slightly Included | Included         |

**COLOR**

|            |   |   |             |   |       |   |               |            |             |
|------------|---|---|-------------|---|-------|---|---------------|------------|-------------|
| D          | E | F | G           | H | I     | J | Faint         | Very Light | Light       |
| Light Tint |   |   | Fancy Light |   | Fancy |   | Fancy Intense |            | Fancy Vivid |



Sample Image Used



© IGI 2020, International Gemological Institute

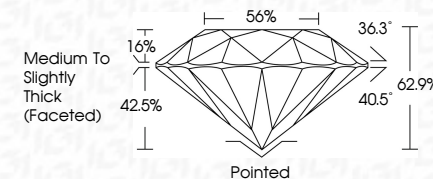
FD - 10 20

## LABORATORY GROWN DIAMOND REPORT

|                         |                             |
|-------------------------|-----------------------------|
| March 29, 2023          |                             |
| IGI Report Number       | LG572331829                 |
| Description             | LABORATORY GROWN<br>DIAMOND |
| Shape and Cutting Style | ROUND BRILLIANT             |
| Measurements            | 6.94 - 6.99 X 4.38 MM       |

## GRADING RESULTS

|               |                                |
|---------------|--------------------------------|
| Carat Weight  | 1.33 CARAT                     |
| Color Grade   | FANCY VIVID BROWNISH<br>YELLOW |
| Clarity Grade | SI 2                           |
| Cut Grade     | EXCELLENT                      |



### ADDITIONAL GRADING INFORMATION

|                |   |
|----------------|---|
| Polish         | EXCELLENT   |
| Symmetry       | EXCELLENT   |
| Fluorescence   | NONE  |
| Inscription(s) |  LG572331829 |

Comments: This Laboratory Grown Diamond was created by Chemical Vapor Deposition (CVD) growth process and may include post-growth treatment.



|  |                         |                             |                                  |
|--|-------------------------|-----------------------------|----------------------------------|
| March 29, 2023   | GI Report No G572331829 | ROUND BRILLIANT             |                                  |
| 54.94 - 6.99 X 4.38 MM   | 1.33 CARAT              | FANCY VIVID BROWNISH YELLOW | EXCELLENT                        |
| Color Weight   | SI 2                    | EXCELLENT                   | 62.1%                            |
| Color Grade  | SI 2                    | EXCELLENT                   | 56%                              |
| Clarity Grade  | SI 2                    | EXCELLENT                   | Medium to Slightly Thick Faceted |
| Our Grade  | EXCELLENT               | EXCELLENT                   | Pointed                          |
| Depth  | EXCELLENT               | EXCELLENT                   | EXCELLENT                        |
| Table  | EXCELLENT               | EXCELLENT                   | EXCELLENT                        |
| Girdle   | EXCELLENT               | EXCELLENT                   | EXCELLENT                        |
| Culet  | EXCELLENT               | EXCELLENT                   | EXCELLENT                        |
| Polish   | EXCELLENT               | EXCELLENT                   | EXCELLENT                        |
| Symmetry   | EXCELLENT               | EXCELLENT                   | EXCELLENT                        |
| Fluorescence   | EXCELLENT               | EXCELLENT                   | EXCELLENT                        |
| Inscriptions(s)  | EXCELLENT               | EXCELLENT                   | EXCELLENT                        |
| Comments:  | EXCELLENT               | EXCELLENT                   | EXCELLENT                        |
| Noted: Very Green Diamond was treated by Chemical Vapor Deposition (CVD) growth process and may include post-growth treatment. | EXCELLENT               | EXCELLENT                   | EXCELLENT                        |