



ELECTRONIC COPY

LABORATORY GROWN DIAMOND REPORT

March 10, 2023
 IGI Report Number **LG572339429**
 Description **LABORATORY GROWN
DIAMOND**
 Shape and Cutting Style **CUT CORNERED RECTANGULAR
MODIFIED BRILLIANT**
 Measurements **9.99 X 7.36 X 4.83 MM**

GRADING RESULTS

Carat Weight **3.04 CARATS**
 Color Grade **H**
 Clarity Grade **VVS 2**

ADDITIONAL GRADING INFORMATION

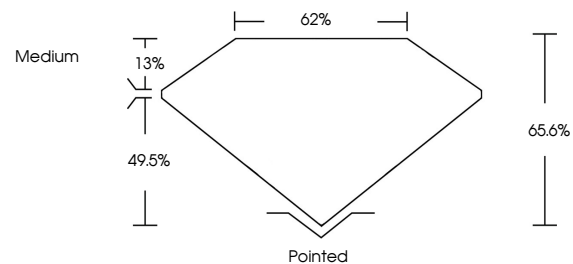
Polish **EXCELLENT**
 Symmetry **EXCELLENT**
 Fluorescence **NONE**
 Inscription(s) **IGI LG572339429**

Comments: This Laboratory Grown Diamond was created by Chemical Vapor Deposition (CVD) growth process and may include post-growth treatment. Type IIa

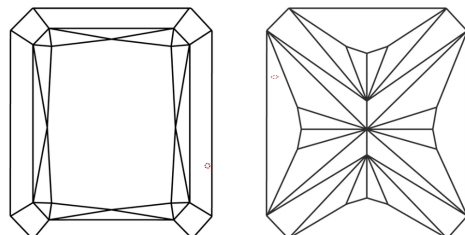
LABORATORY GROWN DIAMOND REPORT

LG572339429
 Report verification at igi.org

PROPORTIONS



CLARITY CHARACTERISTICS



KEY TO SYMBOLS

Red symbols indicate internal characteristics.
 Green symbols indicate external characteristics.

**LABORATORY GROWN
DIAMOND REPORT**

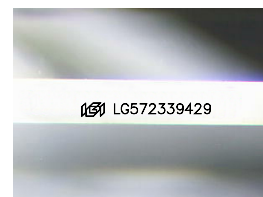
GRADING SCALES

CLARITY

IF	VVS ¹⁻²	VS ¹⁻²	SI ¹⁻²	I ¹⁻³
Internally Flawless	Very Very Slightly Included	Very Slightly Included	Slightly Included	Included

COLOR

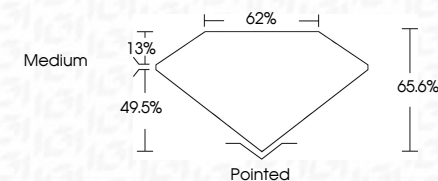
D	E	F	G	H	I	J	Faint	Very Light	Light
---	---	---	---	---	---	---	-------	------------	-------



Sample Image Used

LABORATORY GROWN DIAMOND REPORT

March 10, 2023
 IGI Report Number **LG572339429**
 Description **LABORATORY GROWN
DIAMOND**
 Shape and Cutting Style **CUT CORNERED
RECTANGULAR MODIFIED
BRILLIANT**
 Measurements **9.99 X 7.36 X 4.83 MM**
GRADING RESULTS
 Carat Weight **3.04 CARATS**
 Color Grade **H**
 Clarity Grade **VVS 2**



ADDITIONAL GRADING INFORMATION

Polish **EXCELLENT**
 Symmetry **EXCELLENT**
 Fluorescence **NONE**
 Inscription(s) **IGI LG572339429**
 Comments: This Laboratory Grown Diamond was created by Chemical Vapor Deposition (CVD) growth process and may include post-growth treatment. Type IIa



IGI



March 10, 2023
 IGI Report No **LG572339429**
CUT CORNERED RECT. MODIFIED BRILLIANT
9.99 X 7.36 X 4.83 MM
 Carat Weight **3.04 CARATS**
 Color Grade **H**
 Clarity Grade **VVS 2**
 Depth **49.5%**
 Table **62%**
 Girdle **Medium**
 Culet **Pointed**
 Polish **EXCELLENT**
 Symmetry **EXCELLENT**
 Fluorescence **NONE**
 Inscription(s) **IGI LG572339429**

Comments: This Laboratory Grown Diamond was created by Chemical Vapor Deposition (CVD) growth process and may include post-growth treatment. Type IIa