



**ELECTRONIC COPY**

LG573303400

Report verification at [igi.org](http://igi.org)

**LABORATORY GROWN DIAMOND REPORT**

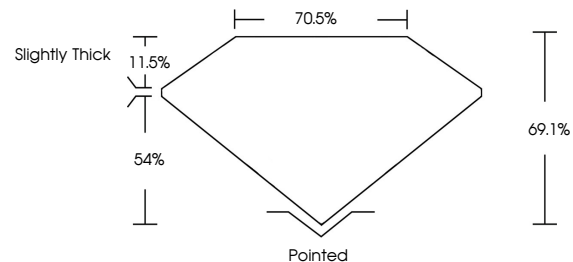
April 11, 2023  
 IGI Report Number **LG573303400**  
 Description **LABORATORY GROWN  
DIAMOND**  
 Shape and Cutting Style **PRINCESS CUT**  
 Measurements **9.46 X 9.32 X 6.44 MM**  
**GRADING RESULTS**  
 Carat Weight **5.00 CARATS**  
 Color Grade **F**  
 Clarity Grade **VS 1**

**ADDITIONAL GRADING INFORMATION**

Polish **EXCELLENT**  
 Symmetry **EXCELLENT**  
 Fluorescence **NONE**  
 Inscription(s) **IGI LG573303400**

Comments: This Laboratory Grown Diamond was created by Chemical Vapor Deposition (CVD) growth process and may include post-growth treatment. Type IIa

**PROPORTIONS**



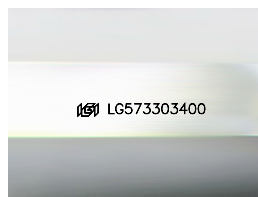
**GRADING SCALES**

**CLARITY**

IF	VVS <sup>1-2</sup>	VS <sup>1-2</sup>	SI <sup>1-2</sup>	I <sup>1-3</sup>
Internally Flawless	Very Very Slightly Included	Very Slightly Included	Slightly Included	Included

**COLOR**

D	E	F	G	H	I	J	Faint	Very Light	Light
---	---	---	---	---	---	---	-------	------------	-------

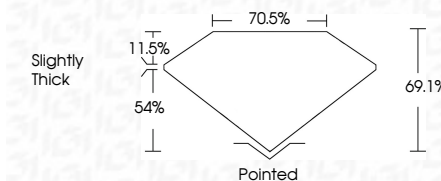


Sample Image Used

April 11, 2023  
 IGI Report Number **LG573303400**  
 Description **LABORATORY GROWN  
DIAMOND**  
 Shape and Cutting Style **PRINCESS CUT**  
 Measurements **9.46 X 9.32 X 6.44 MM**  
**GRADING RESULTS**  
 Carat Weight **5.00 CARATS**  
 Color Grade **F**  
 Clarity Grade **VS 1**

**ADDITIONAL GRADING INFORMATION**

Polish **EXCELLENT**  
 Symmetry **EXCELLENT**  
 Fluorescence **NONE**  
 Inscription(s) **IGI LG573303400**  
 Comments: This Laboratory Grown Diamond was created by Chemical Vapor Deposition (CVD) growth process and may include post-growth treatment. Type IIa



**IGI**

April 11, 2023  
 IGI Report No **LG573303400**  
**PRINCESS CUT**  
**9.46 X 9.32 X 6.44 MM**  
 Carat Weight **5.00 CARATS**  
 Color Grade **F**  
 Clarity Grade **VS 1**  
 Table **69.1%**  
 Girdle **70.5%**  
 Culet **Slightly Thick**  
 Polish **Pointed**  
 Symmetry **EXCELLENT**  
 Fluorescence **EXCELLENT**  
 Inscription(s) **NONE**  
 IGI LG573303400  
 Comments: This Laboratory Grown Diamond was created by Chemical Vapor Deposition (CVD) growth process and may include post-growth treatment. Type IIa