



**INTERNATIONAL
GEMOLOGICAL
INSTITUTE**

ELECTRONIC COPY

**LABORATORY GROWN
DIAMOND REPORT**

LG573305473

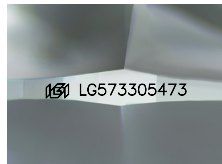
**IGI LABORATORY GROWN
DIAMOND ID REPORT**

March 23, 2023
IGI Report Number **LG573305473**
ROUND BRILLIANT
4.78 - 4.80 X 2.95 MM
Carat Weight 0.41 CARAT
Color Grade D
Clarity Grade VVS 2
Cut Grade IDEAL
Polish EXCELLENT
Symmetry EXCELLENT
Fluorescence NONE
Inscription(s) LG573305473

LABORATORY GROWN DIAMOND REPORT

IGI LABORATORY GROWN DIAMOND IDENTIFICATION REPORT

March 23, 2023
IGI Report Number LG573305473
Description LABORATORY GROWN DIAMOND
Shape and Cutting Style ROUND BRILLIANT
Measurements 4.78 - 4.80 X 2.95 MM



Sample Image Used

Comments: As Grown - No indication of post-growth treatment. This Laboratory Grown Diamond was created by High Pressure High Temperature (HPHT) growth process. Type II

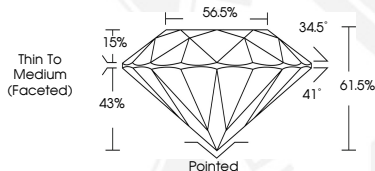
GRADING RESULTS

Carat Weight 0.41 CARAT
Color Grade D
Clarity Grade VVS 2
Cut Grade IDEAL

ADDITIONAL GRADING INFORMATION

Polish EXCELLENT
Symmetry EXCELLENT
Fluorescence NONE
Inscription(s) LG573305473

Comments: As Grown - No indication of post-growth treatment. This Laboratory Grown Diamond was created by High Pressure High Temperature (HPHT) growth process. Type II



**IGI LABORATORY GROWN
DIAMOND ID REPORT**

March 23, 2023
IGI Report Number **LG573305473**
ROUND BRILLIANT
4.78 - 4.80 X 2.95 MM
Carat Weight 0.41 CARAT
Color Grade D
Clarity Grade VVS 2
Cut Grade IDEAL
Polish EXCELLENT
Symmetry EXCELLENT
Fluorescence NONE
Inscription(s) LG573305473

Comments: As Grown - No indication of post-growth treatment. This Laboratory Grown Diamond was created by High Pressure High Temperature (HPHT) growth process. Type II

THIS DOCUMENT WAS PRODUCED WITH THE FOLLOWING SECURITY MEASURES: SPECIAL DOCUMENT PAPER, INK SCREENS, WATERMARK, BACKGROUND DESIGN, HOLOGRAM AND OTHER SECURITY FEATURES NOT LISTED AND DO EXCEED DOCUMENT SECURITY INDUSTRY GUIDELINES.

For terms & conditions and to verify this report, please visit www.igi.org