



**INTERNATIONAL
GEMOLOGICAL
INSTITUTE**

ELECTRONIC COPY

LABORATORY GROWN DIAMOND REPORT

March 25, 2023	
IGI Report Number	LG573311536
Description	LABORATORY GROWN DIAMOND
Shape and Cutting Style	ROUND BRILLIANT
Measurements	8.32 - 8.35 X 5.16 MM

GRADING RESULTS

Carat Weight	2.20 CARATS
Color Grade	F
Clarity Grade	SI 2
Cut Grade	IDEAL

ADDITIONAL GRADING INFORMATION

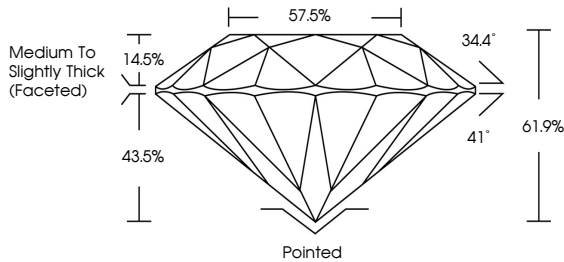
Polish	EXCELLENT
Symmetry	EXCELLENT
Fluorescence	NONE
Inscription(s)	 LG573311536

Comments: This Laboratory Grown Diamond was created by Chemical Vapor Deposition (CVD) growth process and may include post-growth treatment.
Type IIa

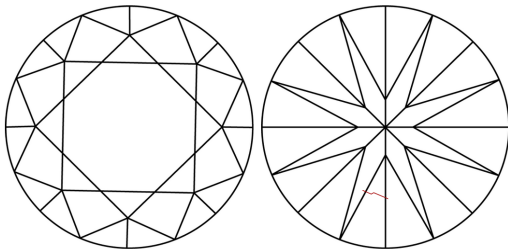
LABORATORY GROWN DIAMOND REPORT

LG573311536
Report verification at igi.org

PROPORTIONS



CLARITY CHARACTERISTICS



KEY TO SYMBOLS

Red symbols indicate internal characteristics.
Green symbols indicate external characteristics.

LABORATORY GROWN DIAMOND REPORT

GRADING SCALES

CLARITY

IF	VVS ¹⁻²	VS ¹⁻²	SI ¹⁻²	I ¹⁻³
Internally Flawless	Very Very Slightly Included	Very Slightly Included	Slightly Included	Included

COLOR

D E F G H I J Faint Very Light Light



Sample Image Used



© IGI 2020, International Gemological Institute

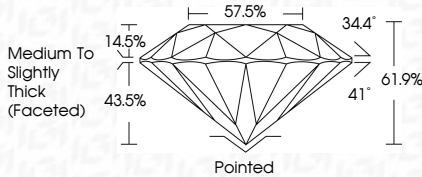
FD - 10 20

LABORATORY GROWN DIAMOND REPORT

March 25, 2023	
IGI Report Number	LG573311536
Description	LABORATORY GROWN DIAMOND
Shape and Cutting Style	ROUND BRILLIANT
Measurements	8.32 - 8.35 X 5.16 MM

GRADING RESULTS

Carat Weight	2.20 CARATS
Color Grade	F
Clarity Grade	SI 2
Cut Grade	IDEAL



ADDITIONAL GRADING INFORMATION

Polish	EXCELLENT
Symmetry	EXCELLENT
Fluorescence	NONE
Inscription(s)	LG57331 LG573311536
Comments: This Laboratory Grown Diamond was created by Chemical Vapor Deposition (CVD) growth process and may include post-growth treatment.	
Type IIa	



IGI

March 26, 2023	IG Report No. LG573311536
ROUND BRILLIANT	2.20 CARATS F
3.92 - 4.35 X 5.16 MM	S12 IDEAL
Color Grade	61.9%
Clarity Grade	57.6%
Cut Grade	Medium To Slightly Thick (faceted)
Depth	Polished
Table	EXCELLENT
Girdle	EXCELLENT
Culet	NONE
Polish	1691 LG573311536
Symmetry	
Fluorescence	
Inscriptions(s)	
Comments:	
	This Laboratory Grown Diamond was created by Chemical Vapor Deposition (CVD) growth process and may include inclusions with treatment.
	type Iia.

www.igi.org

THIS DOCUMENT WAS PRODUCED WITH THE FOLLOWING SECURITY MEASURES: SPECIAL DOCUMENT PAPER, INK SCREENS, WATERMARK BACKGROUND DESIGNS, HOLOGRAM AND OTHER SECURITY FEATURES NOT LISTED AND DO EXCEED DOCUMENT SECURITY INDUSTRY GUIDELINES.