



ELECTRONIC COPY

LABORATORY GROWN DIAMOND REPORT

LG573312735

Report verification at igi.org

LABORATORY GROWN
DIAMOND REPORT

LABORATORY GROWN DIAMOND REPORT

LABORATORY GROWN DIAMOND REPORT

March 27, 2023
IGI Report Number **LG573312735**
Description **LABORATORY GROWN
DIAMOND**
Shape and Cutting Style **SQUARE EMERALD CUT**
Measurements **10.11 X 9.96 X 6.59 MM**

GRADING RESULTS

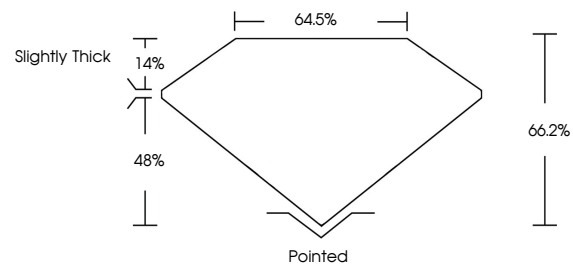
Carat Weight **6.22 CARATS**
Color Grade **H**
Clarity Grade **VS 1**

ADDITIONAL GRADING INFORMATION

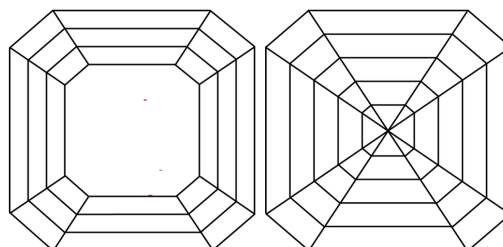
Polish **EXCELLENT**
Symmetry **EXCELLENT**
Fluorescence **NONE**
Inscription(s) **IGI LG573312735**

Comments: This Laboratory Grown Diamond was created by Chemical Vapor Deposition (CVD) growth process and may include post-growth treatment. Type IIa

PROPORTIONS



CLARITY CHARACTERISTICS



KEY TO SYMBOLS

Red symbols indicate internal characteristics.
Green symbols indicate external characteristics.

GRADING SCALES

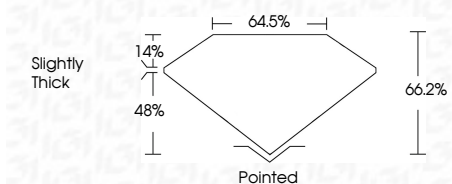
CLARITY

IF	VVS ¹⁻²	VS ¹⁻²	SI ¹⁻²	I ¹⁻³
Internally Flawless	Very Very Slightly Included	Very Slightly Included	Slightly Included	Included

COLOR

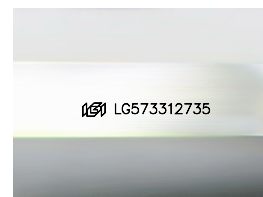
D	E	F	G	H	I	J	Faint	Very Light	Light
---	---	---	---	---	---	---	-------	------------	-------

March 27, 2023
IGI Report Number **LG573312735**
Description **LABORATORY GROWN
DIAMOND**
Shape and Cutting Style **SQUARE EMERALD CUT**
Measurements **10.11 X 9.96 X 6.59 MM**
GRADING RESULTS
Carat Weight **6.22 CARATS**
Color Grade **H**
Clarity Grade **VS 1**



ADDITIONAL GRADING INFORMATION

Polish **EXCELLENT**
Symmetry **EXCELLENT**
Fluorescence **NONE**
Inscription(s) **IGI LG573312735**
Comments: This Laboratory Grown Diamond was created by Chemical Vapor Deposition (CVD) growth process and may include post-growth treatment. Type IIa



Sample Image Used



IGI

March 27, 2023
IGI Report No LG573312735
SQUARE EMERALD CUT
10.11 X 9.96 X 6.59 MM
6.22 CARATS
H
Color Grade
VS 1
Depth 66.2%
Table 64.5%
Girdle
Slightly Thick
Pointed
Polish EXCELLENT
Symmetry EXCELLENT
Fluorescence NONE
Inscription(s) IGI LG573312735
Comments: This Laboratory Grown Diamond was created by Chemical Vapor Deposition (CVD) growth process and may include post-growth treatment. Type IIa