



**INTERNATIONAL  
GEMOLOGICAL  
INSTITUTE**

**ELECTRONIC COPY**

**LABORATORY GROWN  
DIAMOND REPORT**

**LG573386655**

**IGI LABORATORY GROWN  
DIAMOND ID REPORT**

March 22, 2023  
IGI Report Number **LG573386655**  
**ROUND BRILLIANT**  
**5.52 - 5.54 X 3.44 MM**  
Carat Weight 0.65 CARAT  
Color Grade E  
Clarity Grade VS 2  
Cuf Grade IDEAL  
Polish EXCELLENT  
Symmetry EXCELLENT  
Fluorescence NONE  
Inscription(s) LG573386655

**LABORATORY GROWN DIAMOND REPORT**

**IGI LABORATORY GROWN DIAMOND IDENTIFICATION REPORT**

March 22, 2023  
IGI Report Number LG573386655  
Description LABORATORY GROWN DIAMOND  
Shape and Cutting Style ROUND BRILLIANT  
Measurements 5.52 - 5.54 X 3.44 MM



Sample Image Used

**GRADING RESULTS**

Carat Weight 0.65 CARAT  
Color Grade E  
Clarity Grade VS 2  
Cut Grade IDEAL

**ADDITIONAL GRADING INFORMATION**

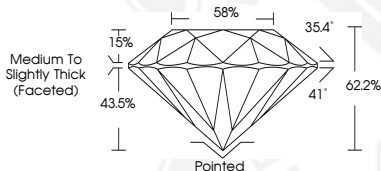
Polish EXCELLENT  
Symmetry EXCELLENT  
Fluorescence NONE  
Inscription(s) LG573386655

Comments: This Laboratory Grown Diamond was created by Chemical Vapor Deposition (CVD) growth process and may include post-growth treatment.  
Type Ila

**IGI LABORATORY GROWN  
DIAMOND ID REPORT**

March 22, 2023  
IGI Report Number **LG573386655**  
**ROUND BRILLIANT**  
**5.52 - 5.54 X 3.44 MM**  
Carat Weight 0.65 CARAT  
Color Grade E  
Clarity Grade VS 2  
Cuf Grade IDEAL  
Polish EXCELLENT  
Symmetry EXCELLENT  
Fluorescence NONE  
Inscription(s) LG573386655

Comments: This Laboratory Grown Diamond was created by Chemical Vapor Deposition (CVD) growth process and may include post-growth treatment.  
Type Ila



THIS DOCUMENT WAS PRODUCED WITH THE FOLLOWING SECURITY MEASURES: SPECIAL DOCUMENT PAPER, INK SCREENS, WATERMARK, BACKGROUND DESIGN, HOLOGRAM AND OTHER SECURITY FEATURES NOT LISTED AND DO EXCEED DOCUMENT SECURITY INDUSTRY GUIDELINES.

For terms & conditions and to verify this report, please visit [www.igi.org](http://www.igi.org)