



ELECTRONIC COPY

LABORATORY GROWN DIAMOND REPORT

LG573389143

Report verification at igi.org

LABORATORY GROWN
DIAMOND REPORT

LABORATORY GROWN DIAMOND REPORT

LABORATORY GROWN DIAMOND REPORT

March 16, 2023
IGI Report Number **LG573389143**
Description **LABORATORY GROWN
DIAMOND**
Shape and Cutting Style **EMERALD CUT**
Measurements **11.72 X 7.90 X 5.03 MM**

GRADING RESULTS

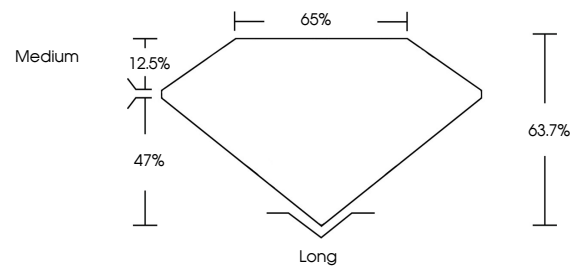
Carat Weight **5.04 CARATS**
Color Grade **F**
Clarity Grade **VS 1**

ADDITIONAL GRADING INFORMATION

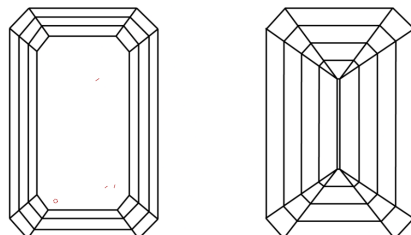
Polish **EXCELLENT**
Symmetry **EXCELLENT**
Fluorescence **NONE**
Inscription(s) **IGI LG573389143**

Comments: This Laboratory Grown Diamond was created by Chemical Vapor Deposition (CVD) growth process and may include post-growth treatment. Type IIa

PROPORTIONS



CLARITY CHARACTERISTICS



KEY TO SYMBOLS

Red symbols indicate internal characteristics.
Green symbols indicate external characteristics.

GRADING SCALES

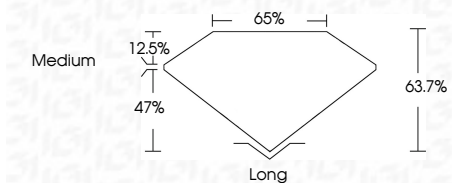
CLARITY

IF	VVS ¹⁻²	VS ¹⁻²	SI ¹⁻²	I ¹⁻³
Internally Flawless	Very Very Slightly Included	Very Slightly Included	Slightly Included	Included

COLOR

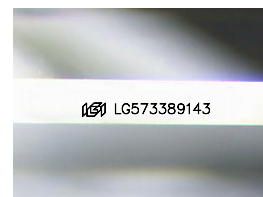
D	E	F	G	H	I	J	Faint	Very Light	Light
---	---	---	---	---	---	---	-------	------------	-------

March 16, 2023
IGI Report Number **LG573389143**
Description **LABORATORY GROWN
DIAMOND**
Shape and Cutting Style **EMERALD CUT**
Measurements **11.72 X 7.90 X 5.03 MM**
GRADING RESULTS
Carat Weight **5.04 CARATS**
Color Grade **F**
Clarity Grade **VS 1**



ADDITIONAL GRADING INFORMATION

Polish **EXCELLENT**
Symmetry **EXCELLENT**
Fluorescence **NONE**
Inscription(s) **IGI LG573389143**
Comments: This Laboratory Grown Diamond was created by Chemical Vapor Deposition (CVD) growth process and may include post-growth treatment. Type IIa



Sample Image Used



IGI

March 16, 2023
IGI Report No LG573389143
EMERALD CUT
11.72 X 7.90 X 5.03 MM
5.04 CARATS
F
VS 1
63.7%
47%
65%
Medium
Long
EXCELLENT
EXCELLENT
NONE
IGI LG573389143

Comments: This Laboratory Grown Diamond was created by Chemical Vapor Deposition (CVD) growth process and may include post-growth treatment. Type IIa