



ELECTRONIC COPY

LABORATORY GROWN DIAMOND REPORT

March 23, 2023	
IGI Report Number	LG573390704
Description	LABORATORY GROWN DIAMOND
Shape and Cutting Style	ROUND BRILLIANT
Measurements	7.15 - 7.22 X 4.32 MM

GRADING RESULTS

Carat Weight	1.35 CARAT
Color Grade	D
Clarity Grade	VS 2
Cut Grade	IDEAL

ADDITIONAL GRADING INFORMATION

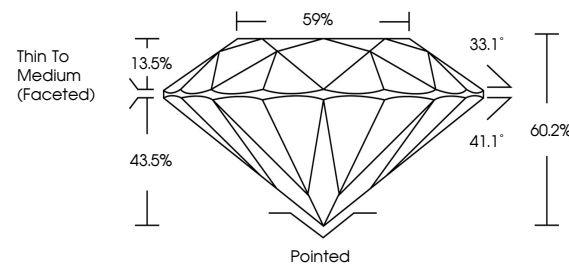
Polish	EXCELLENT
Symmetry	EXCELLENT
Fluorescence	NONE
Inscription(s)	15 LG573390704

Comments: As Grown - No indication of post-growth treatment.
This Laboratory Grown Diamond was created by High Pressure High Temperature (HPHT) growth process.
Type II

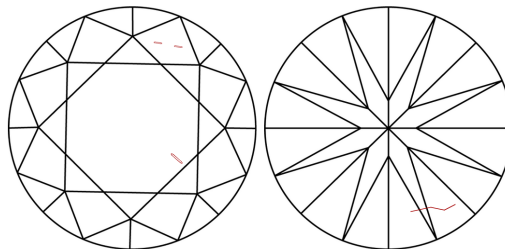
LABORATORY GROWN DIAMOND REPORT

LG573390704
Report verification at igi.org

PROPORTIONS



CLARITY CHARACTERISTICS



KEY TO SYMBOLS

Red symbols indicate internal characteristics.
Green symbols indicate external characteristics.

LABORATORY GROWN
DIAMOND REPORT

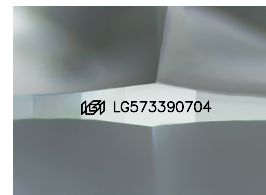
GRADING SCALES

CLARITY

IF	VVS ¹⁻²	VS ¹⁻²	SI ¹⁻²	I ¹⁻³
Internally Flawless	Very Very Slightly Included	Very Slightly Included	Slightly Included	Included

COLOR

D E F G H I J Faint Very Light Light



Sample Image Used



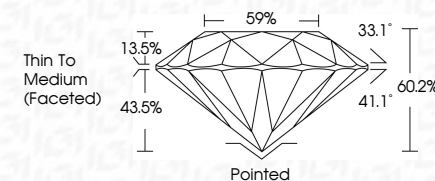
© IGI 2020, International Gemological Institute

FD - 10 20

LABORATORY GROWN DIAMOND REPORT

March 23, 2023	
IGI Report Number	LG573390704
Description	LABORATORY GROWN DIAMOND
Shape and Cutting Style	ROUND BRILLIANT
Measurements	7.15 - 7.22 X 4.32 MM

GRADING RESULTS	
Carat Weight	1.35 CARAT
Color Grade	D
Clarity Grade	VS 2
Cut Grade	IDEAL



ADDITIONAL GRADING INFORMATION

Polish	EXCELLENT
Symmetry	EXCELLENT
Fluorescence	NONE
Inscription(s)	LG LG573390704
Comments: As Grown - No indication of post-growth treatment.	
This Laboratory Grown Diamond was created by High Pressure High Temperature (HPHT) growth process.	
Type II	



March 23, 2023	GI Report No. LGS7390704
ROUND BRILLIANT	
Carat Weight	1.35 CARAT
Color	D
Clarity	VS 2
Cut	IDEAL
Depth	60.2%
Table	69%
Girdle	Thin To Medium (Faceted)
Culet	Pointed
Polish	EXCELLENT
Symmetry	EXCELLENT
Fluorescence	NONE
Inscription(s)	LGS7390704
<p>Comments: As Grown - No indication of post-growth treatment</p> <p>This Laboratory Grown Diamond was created by High Pressure High Temperature (HPHT) growth process.</p> <p>Figure 1</p>	

Comments:
As Grown - No Indication of post-growth treatment.
This Laboratory Grown Diamond was created by High Pressure High Temperature (HPHT) growth process.