



**ELECTRONIC COPY**

**LABORATORY GROWN DIAMOND REPORT**

March 23, 2023  
 IGI Report Number **LG573394583**  
 Description **LABORATORY GROWN  
DIAMOND**  
 Shape and Cutting Style **PRINCESS CUT**  
 Measurements **7.59 X 7.58 X 5.48 MM**

**GRADING RESULTS**

Carat Weight **2.78 CARATS**  
 Color Grade **G**  
 Clarity Grade **VS 1**

**ADDITIONAL GRADING INFORMATION**

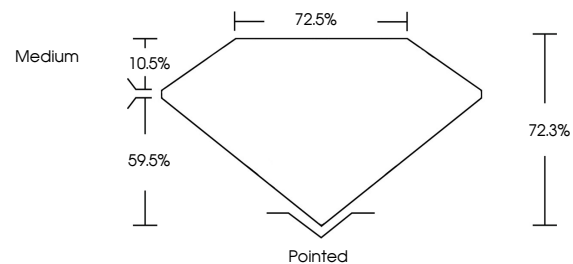
Polish **EXCELLENT**  
 Symmetry **EXCELLENT**  
 Fluorescence **NONE**  
 Inscription(s) **IGI LG573394583**

Comments: This Laboratory Grown Diamond was created by Chemical Vapor Deposition (CVD) growth process and may include post-growth treatment. Type IIa

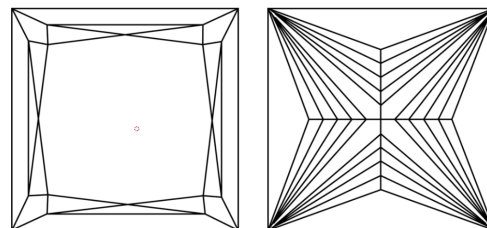
**LABORATORY GROWN DIAMOND REPORT**

**LG573394583**  
 Report verification at [igi.org](http://igi.org)

**PROPORTIONS**



**CLARITY CHARACTERISTICS**



**KEY TO SYMBOLS**

Red symbols indicate internal characteristics.  
 Green symbols indicate external characteristics.

**LABORATORY GROWN  
DIAMOND REPORT**

**LABORATORY GROWN DIAMOND REPORT**

**GRADING SCALES**

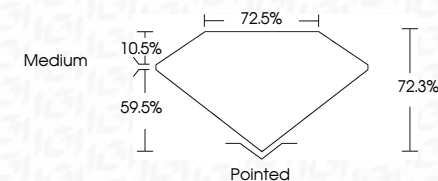
**CLARITY**

IF	VVS <sup>1-2</sup>	VS <sup>1-2</sup>	SI <sup>1-2</sup>	I <sup>1-3</sup>
Internally Flawless	Very Very Slightly Included	Very Slightly Included	Slightly Included	Included

**COLOR**

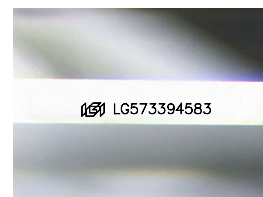
D	E	F	G	H	I	J	Faint	Very Light	Light
---	---	---	---	---	---	---	-------	------------	-------

March 23, 2023  
 IGI Report Number **LG573394583**  
 Description **LABORATORY GROWN  
DIAMOND**  
 Shape and Cutting Style **PRINCESS CUT**  
 Measurements **7.59 X 7.58 X 5.48 MM**  
**GRADING RESULTS**  
 Carat Weight **2.78 CARATS**  
 Color Grade **G**  
 Clarity Grade **VS 1**



**ADDITIONAL GRADING INFORMATION**

Polish **EXCELLENT**  
 Symmetry **EXCELLENT**  
 Fluorescence **NONE**  
 Inscription(s) **IGI LG573394583**  
 Comments: This Laboratory Grown Diamond was created by Chemical Vapor Deposition (CVD) growth process and may include post-growth treatment. Type IIa



Sample Image Used



**IGI**

March 23, 2023  
 IGI Report No **LG573394583**  
**PRINCESS CUT**  
**7.59 X 7.58 X 5.48 MM**  
 Carat Weight **2.78 CARATS**  
 Color Grade **G**  
 Clarity Grade **VS 1**  
 Depth **72.3%**  
 Table **72.5%**  
 Girdle **Medium**  
 Culet **Pointed**  
 Polish **EXCELLENT**  
 Symmetry **EXCELLENT**  
 Fluorescence **NONE**  
 Inscription(s) **IGI LG573394583**

Comments: This Laboratory Grown Diamond was created by Chemical Vapor Deposition (CVD) growth process and may include post-growth treatment. Type IIa