

ELECTRONIC COPY

LABORATORY GROWN DIAMOND REPORT

March 22, 2023	
IGI Report Number	LG573395468
Description	LABORATORY GROWN DIAMOND
Shape and Cutting Style	ROUND BRILLIANT
Measurements	10.49 - 10.54 X 6.52 MM

GRADING RESULTS

Carat Weight	4.46 CARATS
Color Grade	J
Clarity Grade	VS 1
Cut Grade	IDEAL

ADDITIONAL GRADING INFORMATION

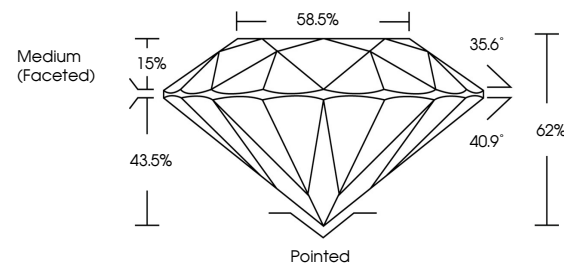
Polish	EXCELLENT
Symmetry	EXCELLENT
Fluorescence	NONE
Inscription(s)	15 LG573395468

Comments: This Laboratory Grown Diamond was created by Chemical Vapor Deposition (CVD) growth process and may include post-growth treatment.
Type IIa

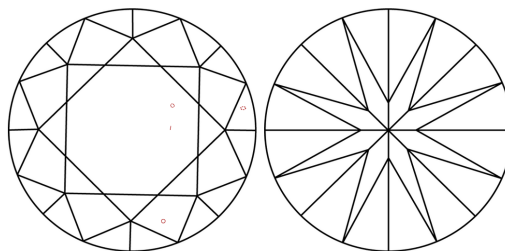
LABORATORY GROWN DIAMOND REPORT

LG573395468
Report verification at igi.org

PROPORTIONS



CLARITY CHARACTERISTICS



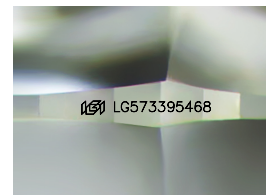
KEY TO SYMBOLS

Red symbols indicate internal characteristics.
Green symbols indicate external characteristics.

LABORATORY GROWN
DIAMOND REPORT

GRADING SCALES

CLARITY									
IF		VVS ¹⁻²			VS ¹⁻²		SI ¹⁻²		I ¹⁻³
Internally Flawless		Very Very Slightly Included			Very Slightly Included		Slightly Included		Included
COLOR									
D	E	F	G	H	I	J	Faint	Very Light	Light



Sample Image Used

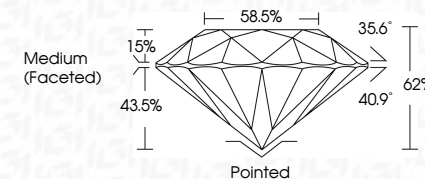


© IGI 2020, International Gemological Institute

FD - 10 20

LABORATORY GROWN DIAMOND REPORT

March 22, 2023	
IGI Report Number	LG573395468
Description	LABORATORY GROWN DIAMOND
Shape and Cutting Style	ROUND BRILLIANT
Measurements	10.49 - 10.54 X 6.52 MM
GRADING RESULTS	
Carat Weight	4.46 CARATS
Color Grade	J
Clarity Grade	VS 1
Cut Grade	IDEAL



ADDITIONAL GRADING INFORMATION

Polish	EXCELLENT
Symmetry	EXCELLENT
Fluorescence	NONE
Inscription(s)	LG573395468
<p>Comments: This Laboratory Grown Diamond was created by Chemical Vapor Deposition (CVD) growth process and may include post-growth treatment.</p> <p>Type IIa</p>	



March 22, 2023
GI Report No LG573395468
ROUND BRILLIANT

10.49 - 10.54 X 6.52 MM	Carat Weight	4.46 CARATS
	Color Grade	J
	Clarity Grade	VS 1
	Cut Grade	IDEAL
	Depth	62%
	Table	68.5%
	Girdle	Medium (Faceted)
	Culet	Pointed
	Polish	EXCELLENT
	Symmetry	EXCELLENT
	Fluorescence	NONE

Comments:
This Laboratory Grown Diamond was created by Chemical Vapor Deposition (CVD) growth process and may include post-growth treatment.