



INTERNATIONAL GEMOLOGICAL INSTITUTE

ELECTRONIC COPY

LABORATORY GROWN DIAMOND REPORT

LG573398919

LABORATORY GROWN DIAMOND REPORT

IGI LABORATORY GROWN DIAMOND IDENTIFICATION REPORT

March 28, 2023
IGI Report Number LG573398919
Description LABORATORY GROWN DIAMOND
Shape and Cutting Style CUT CORNERED RECTANGULAR MODIFIED
BRILLIANT
Measurements 5.32 X 4.09 X 3.00 MM

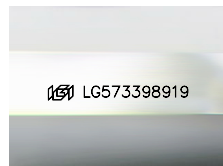
GRADING RESULTS

Carat Weight 0.53 CARAT
Color Grade G
Clarity Grade VS 2

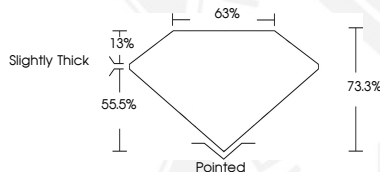
ADDITIONAL GRADING INFORMATION

Polish EXCELLENT
Symmetry EXCELLENT
Fluorescence NONE
Inscription(s) IGI LG573398919

Comments: This Laboratory Grown Diamond was created by
Chemical Vapor Deposition (CVD) growth process and may include
post-growth treatment.
Type Ila



Sample Image Used



IGI LABORATORY GROWN DIAMOND ID REPORT

March 28, 2023
IGI Report Number LG573398919
CUT CORNERED RECTANGULAR
MODIFIED BRILLIANT
5.32 X 4.09 X 3.00 MM
Carat Weight 0.53 CARAT
Color Grade G
Clarity Grade VS 2
Polish EXCELLENT
Symmetry EXCELLENT
Fluorescence NONE
Inscription(s) IGI LG573398919
Comments: This Laboratory Grown
Diamond was created by
Chemical Vapor Deposition (CVD)
growth process and may include
post-growth treatment. Type Ila

IGI LABORATORY GROWN DIAMOND ID REPORT

March 28, 2023
IGI Report Number LG573398919
CUT CORNERED RECTANGULAR
MODIFIED BRILLIANT
5.32 X 4.09 X 3.00 MM
Carat Weight 0.53 CARAT
Color Grade G
Clarity Grade VS 2
Polish EXCELLENT
Symmetry EXCELLENT
Fluorescence NONE
Inscription(s) IGI LG573398919
Comments: This Laboratory Grown
Diamond was created by
Chemical Vapor Deposition (CVD)
growth process and may include
post-growth treatment. Type Ila



THIS DOCUMENT WAS PRODUCED WITH THE FOLLOWING SECURITY MEASURES: SPECIAL DOCUMENT PAPER, INK SCREENS, WATERMARK, BACKGROUND DESIGN, HOLOGRAM AND OTHER SECURITY FEATURES NOT LISTED AND DO EXCEED DOCUMENT SECURITY INDUSTRY GUIDELINES.

For terms & conditions and to verify this report, please visit www.igi.org