



**ELECTRONIC COPY**

**LABORATORY GROWN DIAMOND REPORT**

LG574338117

Report verification at igi.org

**LABORATORY GROWN  
DIAMOND REPORT**

**LABORATORY GROWN DIAMOND REPORT**

**LABORATORY GROWN DIAMOND REPORT**

March 24, 2023  
 IGI Report Number **LG574338117**  
 Description **LABORATORY GROWN  
DIAMOND**  
 Shape and Cutting Style **ROUND BRILLIANT**  
 Measurements **7.49 - 7.52 X 4.60 MM**

**GRADING RESULTS**

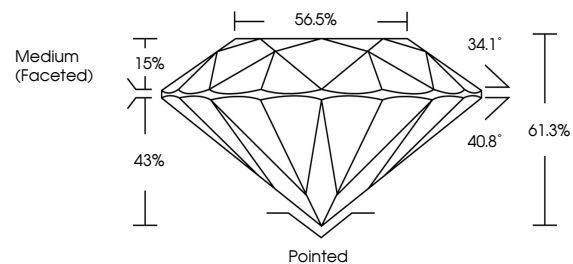
Carat Weight **1.58 CARAT**  
 Color Grade **E**  
 Clarity Grade **VS 1**  
 Cut Grade **IDEAL**

**ADDITIONAL GRADING INFORMATION**

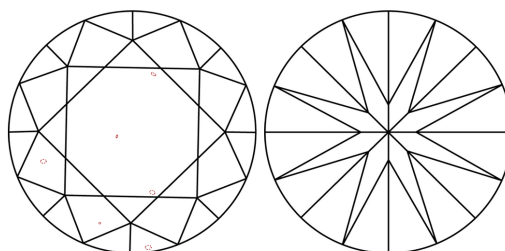
Polish **EXCELLENT**  
 Symmetry **EXCELLENT**  
 Fluorescence **NONE**  
 Inscription(s) **IGI LG574338117**

Comments: This Laboratory Grown Diamond was created by Chemical Vapor Deposition (CVD) growth process and may include post-growth treatment. Type IIa

**PROPORTIONS**



**CLARITY CHARACTERISTICS**



**KEY TO SYMBOLS**

Red symbols indicate internal characteristics.  
 Green symbols indicate external characteristics.

**GRADING SCALES**

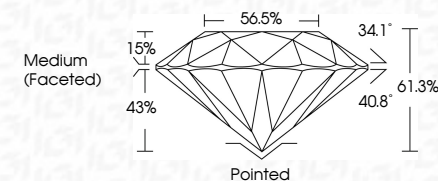
**CLARITY**

| IF                  | VVS <sup>1-2</sup>          | VS <sup>1-2</sup>      | SI <sup>1-2</sup> | I <sup>1-3</sup> |
|---------------------|-----------------------------|------------------------|-------------------|------------------|
| Internally Flawless | Very Very Slightly Included | Very Slightly Included | Slightly Included | Included         |

**COLOR**

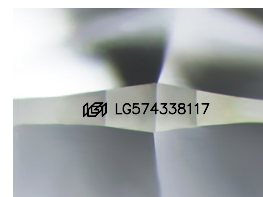
| D | E | F | G | H | I | J | Faint | Very Light | Light |
|---|---|---|---|---|---|---|-------|------------|-------|
|   |   |   |   |   |   |   |       |            |       |

March 24, 2023  
 IGI Report Number **LG574338117**  
 Description **LABORATORY GROWN  
DIAMOND**  
 Shape and Cutting Style **ROUND BRILLIANT**  
 Measurements **7.49 - 7.52 X 4.60 MM**  
**GRADING RESULTS**  
 Carat Weight **1.58 CARAT**  
 Color Grade **E**  
 Clarity Grade **VS 1**  
 Cut Grade **IDEAL**



**ADDITIONAL GRADING INFORMATION**

Polish **EXCELLENT**  
 Symmetry **EXCELLENT**  
 Fluorescence **NONE**  
 Inscription(s) **IGI LG574338117**  
 Comments: This Laboratory Grown Diamond was created by Chemical Vapor Deposition (CVD) growth process and may include post-growth treatment. Type IIa



Sample Image Used



|                 |                           |             |               |           |       |       |        |                  |         |           |              |                |   |
|-----------------|---------------------------|-------------|---------------|-----------|-------|-------|--------|------------------|---------|-----------|--------------|----------------|---|
| March 24, 2023  | IGI Report No LG574338117 | 1.58 CARAT  | E             | VS 1      | IDEAL | 61.3% | 56.5%  | Medium (Faceted) | Pointed | EXCELLENT | EXCELLENT    | NONE           | IGI LG574338117   |
| ROUND BRILLIANT | 7.49 - 7.52 X 4.60 MM     | Color Grade | Clarity Grade | Cut Grade | Depth | Table | Girdle | Culet            | Polish  | Symmetry  | Fluorescence | Inscription(s) | Comments: This Laboratory Grown Diamond was created by Chemical Vapor Deposition (CVD) growth process and may include post-growth treatment. Type IIa |

