



**INTERNATIONAL
GEMOLOGICAL
INSTITUTE**

ELECTRONIC COPY

**LABORATORY GROWN
DIAMOND REPORT**

LG574346455

**IGI LABORATORY GROWN
DIAMOND ID REPORT**

May 25, 2023

IGI Report Number **LG574346455**

**CUT CORNERED RECTANGULAR
MODIFIED BRILLIANT**

6.75 X 4.79 X 3.20 MM

Carat Weight	0.89 CARAT
Color Grade	F
Clarity Grade	SI 1
Polish	EXCELLENT
Symmetry	EXCELLENT
Fluorescence	NONE
Inscription(s)	LG574346455

LABORATORY GROWN DIAMOND REPORT

IGI LABORATORY GROWN DIAMOND IDENTIFICATION REPORT

May 25, 2023

IGI Report Number **LG574346455**

Description **LABORATORY GROWN DIAMOND**

Shape and Cutting Style **CUT CORNERED RECTANGULAR MODIFIED
BRILLIANT**

Measurements **6.75 X 4.79 X 3.20 MM**

GRADING RESULTS

Carat Weight **0.89 CARAT**

Color Grade **F**

Clarity Grade **SI 1**

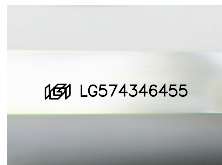
ADDITIONAL GRADING INFORMATION

Polish **EXCELLENT**

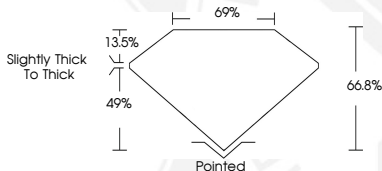
Symmetry **EXCELLENT**

Fluorescence **NONE**

Inscription(s) **LG574346455**



Sample Image Used



**IGI LABORATORY GROWN
DIAMOND ID REPORT**

May 25, 2023

IGI Report Number **LG574346455**

**CUT CORNERED RECTANGULAR
MODIFIED BRILLIANT**

6.75 X 4.79 X 3.20 MM

Carat Weight	0.89 CARAT
Color Grade	F
Clarity Grade	SI 1
Polish	EXCELLENT
Symmetry	EXCELLENT
Fluorescence	NONE
Inscription(s)	LG574346455

THIS DOCUMENT WAS PRODUCED WITH THE FOLLOWING SECURITY MEASURES: SPECIAL DOCUMENT PAPER, INK SCREENS, WATERMARK, BACKGROUND DESIGN, HOLOGRAM AND OTHER SECURITY FEATURES NOT LISTED AND DO EXCEED DOCUMENT SECURITY INDUSTRY GUIDELINES.

For terms & conditions and to verify this report, please visit www.igi.org