



**ELECTRONIC COPY**

**LABORATORY GROWN DIAMOND REPORT**

May 29, 2023  
 IGI Report Number **LG574346764**  
 Description **LABORATORY GROWN  
DIAMOND**  
 Shape and Cutting Style **SQUARE CUSHION MODIFIED  
BRILLIANT**  
 Measurements **5.86 X 5.84 X 3.89 MM**

**GRADING RESULTS**

Carat Weight **1.01 CARAT**  
 Color Grade **G**  
 Clarity Grade **VS 1**

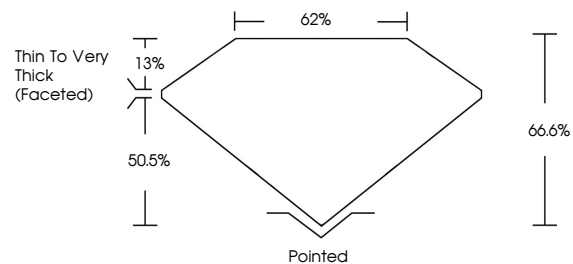
**ADDITIONAL GRADING INFORMATION**

Polish **EXCELLENT**  
 Symmetry **EXCELLENT**  
 Fluorescence **NONE**  
 Inscription(s) **IGI LG574346764**

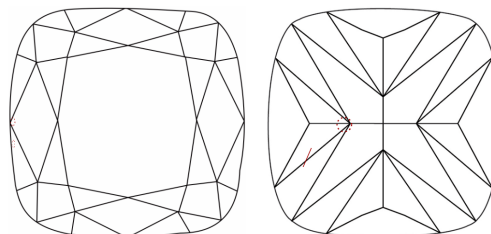
**LABORATORY GROWN DIAMOND REPORT**

**LG574346764**  
 Report verification at [igi.org](http://igi.org)

**PROPORTIONS**



**CLARITY CHARACTERISTICS**



**KEY TO SYMBOLS**

Red symbols indicate internal characteristics.  
 Green symbols indicate external characteristics.

**LABORATORY GROWN  
DIAMOND REPORT**

**GRADING SCALES**

**CLARITY**

IF	VVS <sup>1-2</sup>	VS <sup>1-2</sup>	SI <sup>1-2</sup>	I <sup>1-3</sup>
Internally Flawless	Very Very Slightly Included	Very Slightly Included	Slightly Included	Included

**COLOR**

D	E	F	G	H	I	J	Faint	Very Light	Light

**LABORATORY GROWN DIAMOND REPORT**

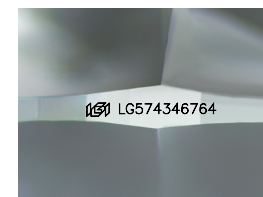
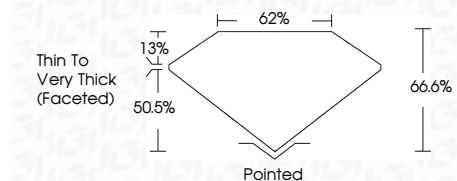
May 29, 2023  
 IGI Report Number **LG574346764**  
 Description **LABORATORY GROWN  
DIAMOND**  
 Shape and Cutting Style **SQUARE CUSHION MODIFIED  
BRILLIANT**  
 Measurements **5.86 X 5.84 X 3.89 MM**

**GRADING RESULTS**

Carat Weight **1.01 CARAT**  
 Color Grade **G**  
 Clarity Grade **VS 1**

**ADDITIONAL GRADING INFORMATION**

Polish **EXCELLENT**  
 Symmetry **EXCELLENT**  
 Fluorescence **NONE**  
 Inscription(s) **IGI LG574346764**



Sample Image Used



**IGI**

May 29, 2023  
 IGI Report No **LG574346764**  
**SQUARE CUSHION MODIFIED BRILLIANT**  
 5.86 X 5.84 X 3.89 MM  
 Carat Weight **1.01 CARAT**  
 Color Grade **G**  
 Clarity Grade **VS 1**  
 Depth **66.6%**  
 Table **62%**  
 Girdle  
 Thin to Very Thick (Faceted)  
 Culet **Pointed**  
 Polish **EXCELLENT**  
 Symmetry **EXCELLENT**  
 Fluorescence **NONE**  
 Inscription(s) **IGI LG574346764**