



**INTERNATIONAL  
GEMOLOGICAL  
INSTITUTE**

**ELECTRONIC COPY**

**LABORATORY GROWN  
DIAMOND REPORT**

**LG574352650**

**IGI LABORATORY GROWN  
DIAMOND ID REPORT**

April 3, 2023  
IGI Report Number **LG574352650**  
**CUT CORNERED SQUARE  
MODIFIED BRILLIANT**  
**4.00 X 3.97 X 2.66 MM**  
Carat Weight 0.36 CARAT  
Color Grade F  
Clarity Grade VS 2  
Polish VERY GOOD  
Symmetry VERY GOOD  
Fluorescence NONE  
Inscription(s) LG574352650

Comments: This Laboratory Grown Diamond was created by Chemical Vapor Deposition (CVD) growth process and may include post-growth treatment. Type Ila

**LABORATORY GROWN DIAMOND REPORT**

**IGI LABORATORY GROWN DIAMOND IDENTIFICATION REPORT**

April 3, 2023  
IGI Report Number LG574352650  
Description LABORATORY GROWN DIAMOND  
Shape and Cutting Style CUT CORNERED SQUARE MODIFIED BRILLIANT  
Measurements 4.00 X 3.97 X 2.66 MM

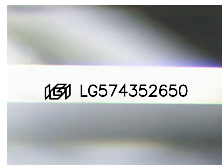
**GRADING RESULTS**

Carat Weight 0.36 CARAT  
Color Grade F  
Clarity Grade VS 2

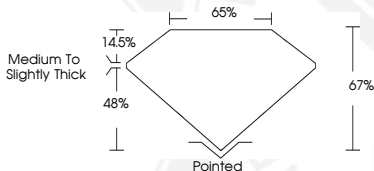
**ADDITIONAL GRADING INFORMATION**

Polish VERY GOOD  
Symmetry VERY GOOD  
Fluorescence NONE  
Inscription(s) LG574352650

Comments: This Laboratory Grown Diamond was created by Chemical Vapor Deposition (CVD) growth process and may include post-growth treatment. Type Ila



Sample Image Used



**IGI LABORATORY GROWN  
DIAMOND ID REPORT**

April 3, 2023  
IGI Report Number **LG574352650**  
**CUT CORNERED SQUARE  
MODIFIED BRILLIANT**  
**4.00 X 3.97 X 2.66 MM**  
Carat Weight 0.36 CARAT  
Color Grade F  
Clarity Grade VS 2  
Polish VERY GOOD  
Symmetry VERY GOOD  
Fluorescence NONE  
Inscription(s) LG574352650

Comments: This Laboratory Grown Diamond was created by Chemical Vapor Deposition (CVD) growth process and may include post-growth treatment. Type Ila



THIS DOCUMENT WAS PRODUCED WITH THE FOLLOWING SECURITY MEASURES: SPECIAL DOCUMENT PAPER, INK SCREENS, WATERMARK, BACKGROUND DESIGN, HOLOGRAM AND OTHER SECURITY FEATURES NOT LISTED AND DO EXCEED DOCUMENT SECURITY INDUSTRY GUIDELINES.

For terms & conditions and to verify this report, please visit [www.igi.org](http://www.igi.org)