



**INTERNATIONAL
GEMOLOGICAL
INSTITUTE**

ELECTRONIC COPY

**LABORATORY GROWN
DIAMOND REPORT**

LG574355424

**IGI LABORATORY GROWN
DIAMOND ID REPORT**

April 17, 2023
IGI Report Number **LG574355424**
ROUND BRILLIANT
6.28 - 6.32 X 3.85 MM
Carat Weight 0.94 CARAT
Color Grade D
Clarity Grade IF
Cut Grade IDEAL
Polish EXCELLENT
Symmetry EXCELLENT
Fluorescence NONE
Inscription(s) LG574355424

LABORATORY GROWN DIAMOND REPORT

IGI LABORATORY GROWN DIAMOND IDENTIFICATION REPORT

April 17, 2023
IGI Report Number LG574355424
Description LABORATORY GROWN DIAMOND
Shape and Cutting Style ROUND BRILLIANT
Measurements 6.28 - 6.32 X 3.85 MM

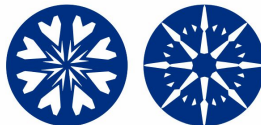
GRADING RESULTS

Carat Weight 0.94 CARAT
Color Grade D
Clarity Grade INTERNALLY FLAWLESS
Cut Grade IDEAL

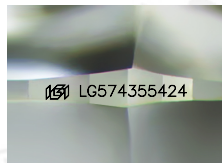
ADDITIONAL GRADING INFORMATION

Polish EXCELLENT
Symmetry EXCELLENT
Fluorescence NONE
Inscription(s) LG574355424

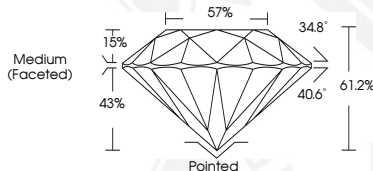
Comments: HEARTS & ARROWS
As Grown - No indication of post-growth treatment.
This Laboratory Grown Diamond was created by High Pressure High Temperature (HPHT) growth process.
Type II



HEARTS & ARROWS



Sample Image Used



**IGI LABORATORY GROWN
DIAMOND ID REPORT**

April 17, 2023
IGI Report Number **LG574355424**
ROUND BRILLIANT
6.28 - 6.32 X 3.85 MM
Carat Weight 0.94 CARAT
Color Grade D
Clarity Grade IF
Cut Grade IDEAL
Polish EXCELLENT
Symmetry EXCELLENT
Fluorescence NONE
Inscription(s) LG574355424

Comments: HEARTS & ARROWS As Grown - No indication of post-growth treatment. This Laboratory Grown Diamond was created by High Pressure High Temperature (HPHT) growth process. Type II

THIS DOCUMENT WAS PRODUCED WITH THE FOLLOWING SECURITY MEASURES: SPECIAL DOCUMENT PAPER, INK SCREENS, WATERMARK, BACKGROUND DESIGN, HOLOGRAM AND OTHER SECURITY FEATURES NOT LISTED AND DO EXCEED DOCUMENT SECURITY INDUSTRY GUIDELINES.

For terms & conditions and to verify this report, please visit www.igi.org