



ELECTRONIC COPY

LABORATORY GROWN DIAMOND REPORT

| | |
|-------------------------|-----------------------------|
| March 31, 2023 | |
| IGI Report Number | LG575377264 |
| Description | LABORATORY GROWN DIAMOND |
| Shape and Cutting Style | ROUND BRILLIANT |
| Measurements | 7.09 - 7.11 X 4.36 MM |

GRADING RESULTS

| | |
|---------------|------------|
| Carat Weight | 1.36 CARAT |
| Color Grade | D |
| Clarity Grade | VVS 2 |
| Cut Grade | IDEAL |

ADDITIONAL GRADING INFORMATION

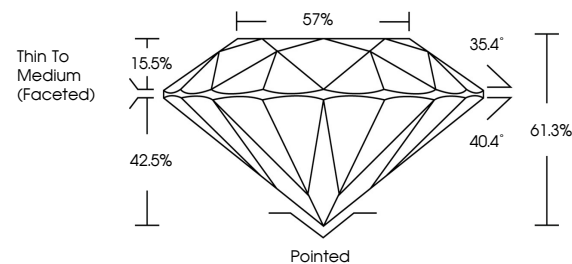
| | |
|----------------|----------------|
| Polish | EXCELLENT |
| Symmetry | EXCELLENT |
| Fluorescence | NONE |
| Inscription(s) | 15 LG575377264 |

Comments: As Grown - No indication of post-growth treatment.
This Laboratory Grown Diamond was created by High Pressure High Temperature (HPHT) growth process.
Type II

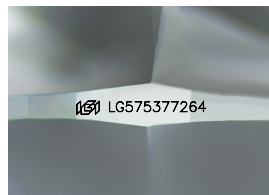
LABORATORY GROWN DIAMOND REPORT

LG575377264
Report verification at igi.org

PROPORTIONS



CLARITY CHARACTERISTICS



KEY TO SYMBOLS

Red symbols indicate internal characteristics.
Green symbols indicate external characteristics.

LABORATORY GROWN
DIAMOND REPORT

GRADING SCALES

CLARITY

| IF | VVS ¹⁻² | VS ¹⁻² | SI ¹⁻² | I ¹⁻³ |
|---------------------|-----------------------------|------------------------|-------------------|------------------|
| Internally Flawless | Very Very Slightly Included | Very Slightly Included | Slightly Included | Included |

COLOR

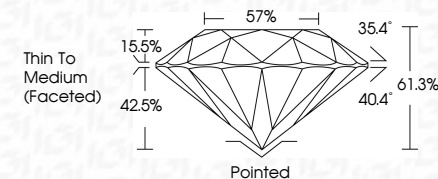
D E F G H I J Faint Very Light Light

LABORATORY GROWN DIAMOND REPORT

| | |
|-------------------------|-----------------------------|
| March 31, 2023 | |
| IGI Report Number | LG57537264 |
| Description | LABORATORY GROWN DIAMOND |
| Shape and Cutting Style | ROUND BRILLIANT |
| Measurements | 7.09 - 7.11 X 4.36 MM |

GRADING RESULTS

| | |
|---------------|------------|
| Carat Weight | 1.36 CARAT |
| Color Grade | D |
| Clarity Grade | VVS 2 |
| Cut Grade | IDEAL |



ADDITIONAL GRADING INFORMATION

| | |
|--|----------------------------|
| Polish | EXCELLENT |
| Symmetry | EXCELLENT |
| Fluorescence | NONE |
| Inscription(s) | IGI LG575377264 |
| Comments: As Grown - No indication of post-growth treatment. | |
| This Laboratory Grown Diamond was created by High Pressure High Temperature (HPHT) growth process. | |
| Type II | |



© IGI 2020, International Gemological Institute

FD - 10 20

www.igi.org

THIS DOCUMENT WAS PRODUCED WITH THE FOLLOWING SECURITY MEASURES: SPECIAL DOCUMENT PAPER, INK SCREENS, WATERMARK BACKGROUND DESIGNS, HOLOGRAM AND OTHER SECURITY FEATURES NOT LISTED AND DO EXCEED DOCUMENT SECURITY INDUSTRY GUIDELINES

March 31, 2023
GI Report No LG575377264
ROUND BRILLIANT

| | | |
|-----------------------|----------------|-----------|
| 7.09 - 7.11 X 4.36 MM | 1.36 CARAT | D |
| Carat Weight | VVS 2 | IDEAL |
| Color Grade | 61.3% | 57% |
| Clarity Grade | Thin To Medium | (faceted) |
| Cut Grade | | Pointed |
| Depth | | EXCELLENT |
| Table | | EXCELLENT |
| Girdle | | NONE |
| Culet | | |
| Polish | | |
| Symmetry | | |
| Fluorescence | | |

Comments:
As Grown - No Indication of post-growth treatment.
This Laboratory Grown Diamond was created by High Pressure High Temperature (HPHT) growth process.