



**ELECTRONIC COPY**

LG575388263

Report verification at [igi.org](http://igi.org)

**LABORATORY GROWN DIAMOND REPORT**

April 26, 2023  
IGI Report Number **LG575388263**

Description **LABORATORY GROWN  
DIAMOND**

Shape and Cutting Style **EMERALD CUT**

Measurements **10.07 X 7.23 X 4.80 MM**

**GRADING RESULTS**

Carat Weight **3.36 CARATS**

Color Grade **F**

Clarity Grade **SI 1**

**ADDITIONAL GRADING INFORMATION**

Polish **EXCELLENT**

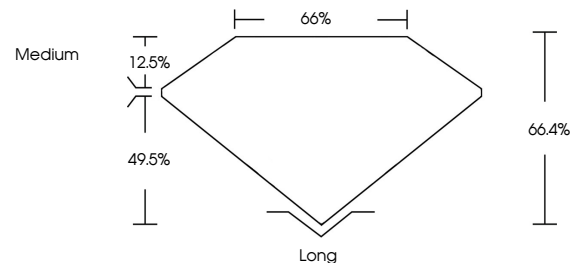
Symmetry **EXCELLENT**

Fluorescence **NONE**

Inscription(s) **IGI LG575388263**

Comments: This Laboratory Grown Diamond was created by Chemical Vapor Deposition (CVD) growth process and may include post-growth treatment. Type IIa

**PROPORTIONS**



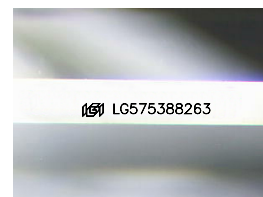
**GRADING SCALES**

**CLARITY**

IF	VVS <sup>1-2</sup>	VS <sup>1-2</sup>	SI <sup>1-2</sup>	I <sup>1-3</sup>
Internally Flawless	Very Very Slightly Included	Very Slightly Included	Slightly Included	Included

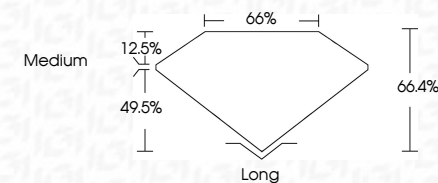
**COLOR**

D	E	F	G	H	I	J	Faint	Very Light	Light
---	---	---	---	---	---	---	-------	------------	-------



Sample Image Used

April 26, 2023  
IGI Report Number **LG575388263**  
Description **LABORATORY GROWN  
DIAMOND**  
Shape and Cutting Style **EMERALD CUT**  
Measurements **10.07 X 7.23 X 4.80 MM**  
**GRADING RESULTS**  
Carat Weight **3.36 CARATS**  
Color Grade **F**  
Clarity Grade **SI 1**



**ADDITIONAL GRADING INFORMATION**

Polish **EXCELLENT**

Symmetry **EXCELLENT**

Fluorescence **NONE**

Inscription(s) **IGI LG575388263**

Comments: This Laboratory Grown Diamond was created by Chemical Vapor Deposition (CVD) growth process and may include post-growth treatment. Type IIa



**IGI**



April 26, 2023	IGI Report No LG575388263	EMERALD CUT	10.07 X 7.23 X 4.80 MM	3.36 CARATS	F	SI 1	66.4%	66%	Medium	Long	EXCELLENT	EXCELLENT	NONE	IGI LG575388263
Color Grade	Clarity Grade	Table	Depth	Grades	Culet	Polish	Symmetry	Fluorescence	Inscription(s)	Comments: This Laboratory Grown Diamond was created by Chemical Vapor Deposition (CVD) growth process and may include post-growth treatment. Type IIa				