



ELECTRONIC COPY

LABORATORY GROWN DIAMOND REPORT

April 8, 2023	
IGI Report Number	LG576350928
Description	LABORATORY GROWN DIAMOND
Shape and Cutting Style	ROUND BRILLIANT
Measurements	9.64 - 9.70 X 6.05 MM

GRADING RESULTS

Carat Weight	3.53 CARATS
Color Grade	H
Clarity Grade	VS 1
Cut Grade	IDEAL

ADDITIONAL GRADING INFORMATION

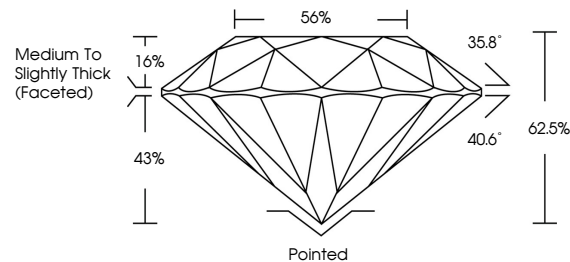
Polish	EXCELLENT
Symmetry	EXCELLENT
Fluorescence	NONE
Inscription(s)	15 LG576350928

Comments: This Laboratory Grown Diamond was created by Chemical Vapor Deposition (CVD) growth process and may include post-growth treatment.
Type IIa

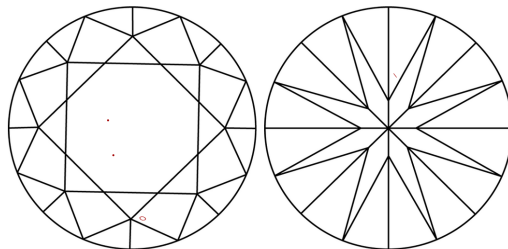
LABORATORY GROWN DIAMOND REPORT

LG576350928
Report verification at igi.org

PROPORTIONS



CLARITY CHARACTERISTICS



KEY TO SYMBOLS

Red symbols indicate internal characteristics.
Green symbols indicate external characteristics.

LABORATORY GROWN
DIAMOND REPORT

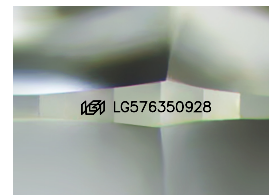
GRADING SCALES

CLARITY

IF	VVS ¹⁻²	VS ¹⁻²	SI ¹⁻²	I ¹⁻³
Internally Flawless	Very Very Slightly Included	Very Slightly Included	Slightly Included	Included

COLOR

D E F G H I J Faint Very Light Light



Sample Image Used



© IGI 2020, International Gemological Institute

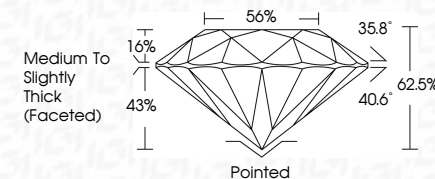
FD - 10 20

LABORATORY GROWN DIAMOND REPORT

April 8, 2023	
IGI Report Number	LG576350928
Description	LABORATORY GROWN DIAMOND
Shape and Cutting Style	ROUND BRILLIANT
Measurements	9.64 - 9.70 X 6.05 MM

GRADING RESULTS

Carat Weight	3.53 CARATS
Color Grade	H
Clarity Grade	VS 1
Cut Grade	IDEAL



ADDITIONAL GRADING INFORMATION

Polish	EXCELLENT
Symmetry	EXCELLENT
Fluorescence	NONE
Inscription(s)	 LG576350928

Comments: This Laboratory Grown Diamond was created by Chemical Vapor Deposition (CVD) growth process and may include post-growth treatment.
Type IIa



April 8, 2023	Q1 Report No LG574359228	3.53 CARATS	H VS 1	Pointed	
ROUND BRILLIANT			IDEAL 62.5%	EXCELLENT	
			55%	EXCELLENT	NONE
			Medium to Slightly Thick Faceted		461 LG574359228
6.64 - 9.70 x 6.05 MM					
Carat Weight	Color Grade	Clarity Grade	Cut Grade	Culet	
			Depth	Polish	
			Table	Symmetry	
			Girdle	Fluorescence	
				Inscriptions(s)	
<p>Comments: Very Green Diamond was treated by Chemical Vapor Deposition (CVD) growth process and may include post-growth treatment.</p>					
Type IIA					