



# INTERNATIONAL GEMOLOGICAL INSTITUTE

ELECTRONIC COPY

## LABORATORY GROWN DIAMOND REPORT

LG576354577

### LABORATORY GROWN DIAMOND REPORT

#### IGI LABORATORY GROWN DIAMOND IDENTIFICATION REPORT

April 19, 2023  
IGI Report Number LG576354577  
Description LABORATORY GROWN DIAMOND  
Shape and Cutting Style CUSHION MODIFIED BRILLIANT  
Measurements 5.10 X 4.82 X 3.35 MM

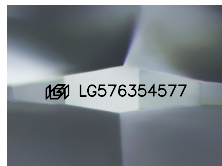
#### GRADING RESULTS

Carat Weight 0.72 CARAT  
Color Grade FANCY VIVID YELLOW  
Clarity Grade VS 2

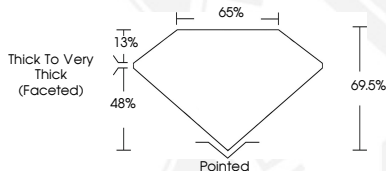
#### ADDITIONAL GRADING INFORMATION

Polish VERY GOOD  
Symmetry VERY GOOD  
Fluorescence NONE  
Inscription(s) IGI LG576354577

Comments: As Grown - No indication of post-growth treatment.  
This Laboratory Grown Diamond was created by High Pressure High Temperature (HPHT) growth process.



Sample Image Used



#### IGI LABORATORY GROWN DIAMOND ID REPORT

April 19, 2023  
IGI Report Number LG576354577  
CUSHION MODIFIED BRILLIANT  
5.10 X 4.82 X 3.35 MM  
Carat Weight 0.72 CARAT  
Color Grade FANCY VIVID YELLOW  
Clarity Grade VS 2  
Polish VERY GOOD  
Symmetry VERY GOOD  
Fluorescence NONE  
Inscription(s) IGI LG576354577  
Comments: As Grown - No indication of post-growth treatment. This Laboratory Grown Diamond was created by High Pressure High Temperature (HPHT) growth process.

#### IGI LABORATORY GROWN DIAMOND ID REPORT

April 19, 2023  
IGI Report Number LG576354577  
CUSHION MODIFIED BRILLIANT  
5.10 X 4.82 X 3.35 MM  
Carat Weight 0.72 CARAT  
Color Grade FANCY VIVID YELLOW  
Clarity Grade VS 2  
Polish VERY GOOD  
Symmetry VERY GOOD  
Fluorescence NONE  
Inscription(s) IGI LG576354577  
Comments: As Grown - No indication of post-growth treatment. This Laboratory Grown Diamond was created by High Pressure High Temperature (HPHT) growth process.



THIS DOCUMENT WAS PRODUCED WITH THE FOLLOWING SECURITY MEASURES: SPECIAL DOCUMENT PAPER, INK SCREENS, WATERMARK, BACKGROUND DESIGN, HOLOGRAM AND OTHER SECURITY FEATURES NOT LISTED AND DO EXCEED DOCUMENT SECURITY INDUSTRY GUIDELINES.

For terms & conditions and to verify this report, please visit [www.igi.org](http://www.igi.org)