



## LABORATORY GROWN DIAMOND REPORT

May 5, 2023	
IGI Report Number	LG577378611
Description	LABORATORY GROWN DIAMOND
Shape and Cutting Style	CUT CORNERED RECTANGULAR MODIFIED BRILLIANT
Measurements	10.65 X 7.85 X 5.45 MM

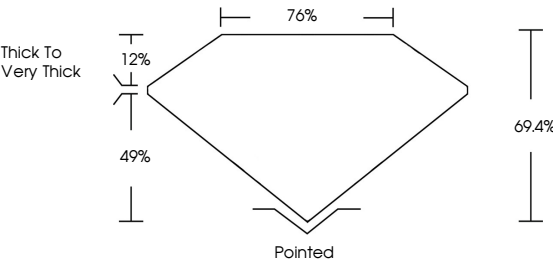
Carat Weight	4.51 CARATS
Color Grade	G
Clarity Grade	VVS 2

Polish	EXCELLENT
Symmetry	EXCELLENT
Fluorescence	NONE
Inscription(s)	 LG577378611

Comments: This Laboratory Grown Diamond was created by Chemical Vapor Deposition (CVD) growth process and may include post-growth treatment.  
Type IIa

LG577378611

## PROPORTIONS



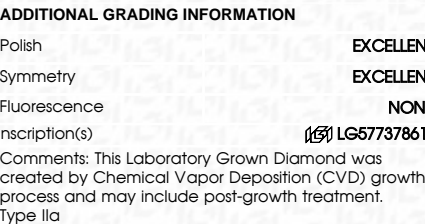
Red symbols indicate internal characteristics.  
Green symbols indicate external characteristics.

## GRADING SCALES

IF				VVS <sup>1-2</sup>				VS <sup>1-2</sup>				SI <sup>1-2</sup>				I <sup>1-3</sup>			
Internally Flawless				Very Very Slightly Included				Very Slightly Included				Slightly Included				Included			
COLOR																			
D		E		F		G		H		I		J		Faint		Very Light		Light	



May 5, 2023	
IGI Report Number	LG577378611
Description	LABORATORY GROWN DIAMOND
Shape and Cutting Style	CUT CORNERED RECTANGULAR MODIFIED BRILLIANT
Measurements	10.65 X 7.85 X 5.45 MM
GRADING RESULTS	
Carat Weight	4.51 CARATS
Color Grade	G
Clarity Grade	VVS 2



FD - 10 20

THIS DOCUMENT WAS PRODUCED WITH THE FOLLOWING SECURITY MEASURES: SPECIAL DOCUMENT PAPER, INK SCREENS, WATERMARK BACKGROUND DESIGNS, HOLOGRAM AND OTHER SECURITY FEATURES NOT LISTED AND DO EXCEED DOCUMENT SECURITY INDUSTRY GUIDELINES.

May 5, 2023	IGI Report No. LG57378611	10.05 x 7.85 x 5.45 MM	Carat Weight Color Grade	1.61 CARATS G	VVS 2 69.45% 70%	Thick to Very Thick	Pointed Excellent Excellent None	Polish Symmetry Fluorescence Inclusions(s)	IGI LG57378611	Comments: The Laboratory Grown Diamond was created by Chemical Vapor Deposition (CVD) and may include post-growth treatment.
			Clarity Grade							Type Ia