



**INTERNATIONAL  
GEMOLOGICAL  
INSTITUTE**

**ELECTRONIC COPY**

**LABORATORY GROWN  
DIAMOND REPORT**

**LG578315875**

**IGI LABORATORY GROWN  
DIAMOND ID REPORT**

April 21, 2023  
IGI Report Number **LG578315875**  
**EMERALD CUT**  
**6.24 X 4.24 X 2.64 MM**  
Carat Weight 0.70 CARAT  
Color Grade I  
Clarity Grade VS 1  
Polish EXCELLENT  
Symmetry EXCELLENT  
Fluorescence NONE  
Inscription(s) LG578315875

Comments: This Laboratory Grown Diamond was created by Chemical Vapor Deposition (CVD) growth process and may include post-growth treatment. Type Ila

**LABORATORY GROWN DIAMOND REPORT**

**IGI LABORATORY GROWN DIAMOND IDENTIFICATION REPORT**

April 21, 2023  
IGI Report Number LG578315875  
Description LABORATORY GROWN DIAMOND  
Shape and Cutting Style EMERALD CUT  
Measurements 6.24 X 4.24 X 2.64 MM

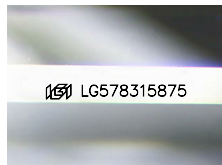
**GRADING RESULTS**

Carat Weight 0.70 CARAT  
Color Grade I  
Clarity Grade VS 1

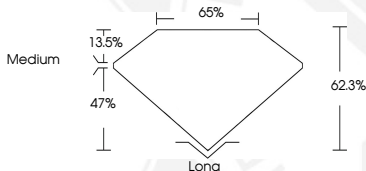
**ADDITIONAL GRADING INFORMATION**

Polish EXCELLENT  
Symmetry EXCELLENT  
Fluorescence NONE  
Inscription(s) LG578315875

Comments: This Laboratory Grown Diamond was created by Chemical Vapor Deposition (CVD) growth process and may include post-growth treatment.  
Type Ila



Sample Image Used



**IGI LABORATORY GROWN  
DIAMOND ID REPORT**

April 21, 2023  
IGI Report Number **LG578315875**  
**EMERALD CUT**  
**6.24 X 4.24 X 2.64 MM**  
Carat Weight 0.70 CARAT  
Color Grade I  
Clarity Grade VS 1  
Polish EXCELLENT  
Symmetry EXCELLENT  
Fluorescence NONE  
Inscription(s) LG578315875

Comments: This Laboratory Grown Diamond was created by Chemical Vapor Deposition (CVD) growth process and may include post-growth treatment. Type Ila

THIS DOCUMENT WAS PRODUCED WITH THE FOLLOWING SECURITY MEASURES: SPECIAL DOCUMENT PAPER, INK SCREENS, WATERMARK, BACKGROUND DESIGN, HOLOGRAM AND OTHER SECURITY FEATURES NOT LISTED AND DO EXCEED DOCUMENT SECURITY INDUSTRY GUIDELINES.

For terms & conditions and to verify this report, please visit [www.igi.org](http://www.igi.org)