



ELECTRONIC COPY

LABORATORY GROWN DIAMOND REPORT

April 24, 2023	
IGI Report Number	LG578322951
Description	LABORATORY GROWN DIAMOND
Shape and Cutting Style	ROUND BRILLIANT
Measurements	8.21 - 8.24 X 5.13 MM

GRADING RESULTS

Carat Weight	2.15 CARATS
Color Grade	I
Clarity Grade	SI 1
Cut Grade	IDEAL

ADDITIONAL GRADING INFORMATION

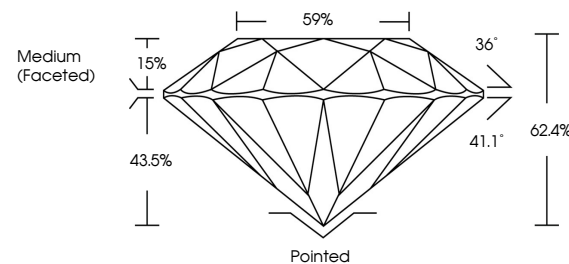
Polish	EXCELLENT
Symmetry	EXCELLENT
Fluorescence	NONE
Inscription(s)	 LG578322951

Comments: This Laboratory Grown Diamond was created by Chemical Vapor Deposition (CVD) growth process and may include post-growth treatment.
Type IIa

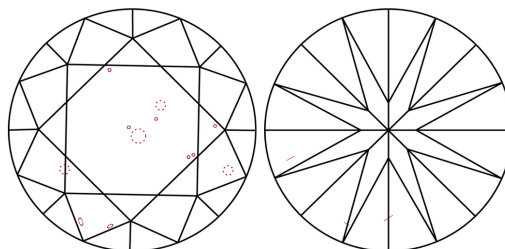
LABORATORY GROWN DIAMOND REPORT

LG578322951
Report verification at igi.org

PROPORTIONS



CLARITY CHARACTERISTICS



KEY TO SYMBOLS

Red symbols indicate internal characteristics.
Green symbols indicate external characteristics.

LABORATORY GROWN
DIAMOND REPORT

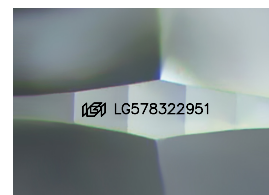
GRADING SCALES

CLARITY

IF	VVS ¹⁻²	VS ¹⁻²	SI ¹⁻²	I ¹⁻³
Internally Flawless	Very Very Slightly Included	Very Slightly Included	Slightly Included	Included

COLOR

D E F G H I J Faint Very Light Light



Sample Image Used



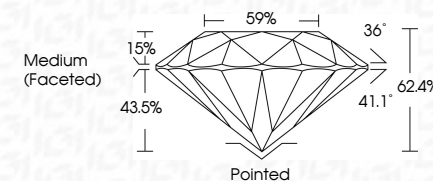
© IGI 2020, International Gemological Institute

FD - 10 20

LABORATORY GROWN DIAMOND REPORT

April 24, 2023	
IGI Report Number	LG578322951
Description	LABORATORY GROWN DIAMOND
Shape and Cutting Style	ROUND BRILLIANT
Measurements	8.21 - 8.24 X 5.13 MM

Carat Weight	2.15 CARATS
Color Grade	I
Clarity Grade	SI 1
Cut Grade	IDEAL



ADDITIONAL GRADING INFORMATION

Polish	EXCELLENT
Symmetry	EXCELLENT
Fluorescence	NONE
Inscription(s)	 LG578322951

Comments: This Laboratory Grown Diamond was created by Chemical Vapor Deposition (CVD) growth process and may include post-growth treatment.
Type IIa



April 24, 2023	GROWTH REPORT	GI57832961
ROUND BRILLIANT	1.21 - 6.24 X 5.13 MM	2.15 CARATS
Coral Weight	Color Grade	S I
Clarity Grade	Cut Grade	IDEAL
Depth	Table	62.4%
Girdle	Medium (Faceted)	59%
Quiet	Patched	Excellent
Polish	EXCELLENT	NONE
Symmetry	Fluorescence	(#) LGS7832961
Inscription(s)		

Comments: Chemically Grown Diamond was created by Chemical Vapor Deposition (CVD) growth process and may include post-growth treatment.

Type IIa