



**INTERNATIONAL
GEMOLOGICAL
INSTITUTE**

ELECTRONIC COPY

**LABORATORY GROWN
DIAMOND REPORT**

LG578343195

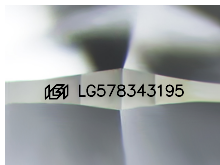
**IGI LABORATORY GROWN
DIAMOND ID REPORT**

May 12, 2023
IGI Report Number **LG578343195**
ROUND BRILLIANT
4.49 - 4.52 X 2.77 MM
Carat Weight 0.35 CARAT
Color Grade FANCY VIVID PINK
Clarity Grade VS 1
Cut Grade EXCELLENT
Polish EXCELLENT
Symmetry VERY GOOD
Fluorescence SLIGHT
Inscription(s) LG578343195

LABORATORY GROWN DIAMOND REPORT

IGI LABORATORY GROWN DIAMOND IDENTIFICATION REPORT

May 12, 2023
IGI Report Number LG578343195
Description LABORATORY GROWN DIAMOND
Shape and Cutting Style ROUND BRILLIANT
Measurements 4.49 - 4.52 X 2.77 MM



Sample Image Used

Comments: This Laboratory Grown Diamond was created by Chemical Vapor Deposition (CVD) growth process. Indications of post-growth treatment.

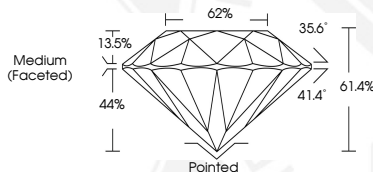
GRADING RESULTS

Carat Weight 0.35 CARAT
Color Grade FANCY VIVID PINK
Clarity Grade VS 1
Cut Grade EXCELLENT

ADDITIONAL GRADING INFORMATION

Polish EXCELLENT
Symmetry VERY GOOD
Fluorescence SLIGHT
Inscription(s) LG578343195

Comments: This Laboratory Grown Diamond was created by Chemical Vapor Deposition (CVD) growth process. Indications of post-growth treatment.



**IGI LABORATORY GROWN
DIAMOND ID REPORT**

May 12, 2023
IGI Report Number **LG578343195**
ROUND BRILLIANT
4.49 - 4.52 X 2.77 MM
Carat Weight 0.35 CARAT
Color Grade FANCY VIVID PINK
Clarity Grade VS 1
Cut Grade EXCELLENT
Polish EXCELLENT
Symmetry VERY GOOD
Fluorescence SLIGHT
Inscription(s) LG578343195

Comments: This Laboratory Grown Diamond was created by Chemical Vapor Deposition (CVD) growth process. Indications of post-growth treatment.

THIS DOCUMENT WAS PRODUCED WITH THE FOLLOWING SECURITY MEASURES: SPECIAL DOCUMENT PAPER, INK SCREENS, WATERMARK, BACKGROUND DESIGN, HOLOGRAM AND OTHER SECURITY FEATURES NOT LISTED AND DO EXCEED DOCUMENT SECURITY INDUSTRY GUIDELINES.

For terms & conditions and to verify this report, please visit www.igi.org