



**INTERNATIONAL  
GEMOLOGICAL  
INSTITUTE**

**ELECTRONIC COPY**

**LABORATORY GROWN  
DIAMOND REPORT**

**LG578346692**

**IGI LABORATORY GROWN  
DIAMOND ID REPORT**

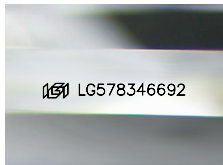
May 6, 2023  
IGI Report Number **LG578346692**  
**EMERALD CUT**  
**4.60 X 3.04 X 2.09 MM**  
Carat Weight 0.30 CARAT  
Color Grade D  
Clarity Grade VVS 1  
Polish VERY GOOD  
Symmetry VERY GOOD  
Fluorescence NONE  
Inscription(s) LG578346692

Comments: As Grown - No indication of post-growth treatment. This Laboratory Grown Diamond was created by High Pressure High Temperature (HPHT) growth process. Type II

**LABORATORY GROWN DIAMOND REPORT**

**IGI LABORATORY GROWN DIAMOND IDENTIFICATION REPORT**

May 6, 2023  
IGI Report Number LG578346692  
Description LABORATORY GROWN DIAMOND  
Shape and Cutting Style EMERALD CUT  
Measurements 4.60 X 3.04 X 2.09 MM



Sample Image Used

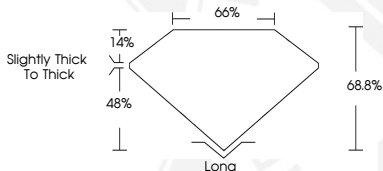
**GRADING RESULTS**

Carat Weight 0.30 CARAT  
Color Grade D  
Clarity Grade VVS 1

**ADDITIONAL GRADING INFORMATION**

Polish VERY GOOD  
Symmetry VERY GOOD  
Fluorescence NONE  
Inscription(s) LG578346692

Comments: As Grown - No indication of post-growth treatment. This Laboratory Grown Diamond was created by High Pressure High Temperature (HPHT) growth process. Type II



**IGI LABORATORY GROWN  
DIAMOND ID REPORT**

May 6, 2023  
IGI Report Number **LG578346692**  
**EMERALD CUT**  
**4.60 X 3.04 X 2.09 MM**  
Carat Weight 0.30 CARAT  
Color Grade D  
Clarity Grade VVS 1  
Polish VERY GOOD  
Symmetry VERY GOOD  
Fluorescence NONE  
Inscription(s) LG578346692

Comments: As Grown - No indication of post-growth treatment. This Laboratory Grown Diamond was created by High Pressure High Temperature (HPHT) growth process. Type II

THIS DOCUMENT WAS PRODUCED WITH THE FOLLOWING SECURITY MEASURES: SPECIAL DOCUMENT PAPER, INK SCREENS, WATERMARK, BACKGROUND DESIGN, HOLOGRAM AND OTHER SECURITY FEATURES NOT LISTED AND DO EXCEED DOCUMENT SECURITY INDUSTRY GUIDELINES.

For terms & conditions and to verify this report, please visit [www.igi.org](http://www.igi.org)