



ELECTRONIC COPY

LABORATORY GROWN DIAMOND REPORT

April 27, 2023	
IGI Report Number	LG578350856
Description	LABORATORY GROWN DIAMOND
Shape and Cutting Style	ROUND BRILLIANT
Measurements	7.06 - 7.10 X 4.27 MM

GRADING RESULTS

Carat Weight	1.32 CARAT
Color Grade	F
Clarity Grade	VVS 1
Cut Grade	IDEAL

ADDITIONAL GRADING INFORMATION

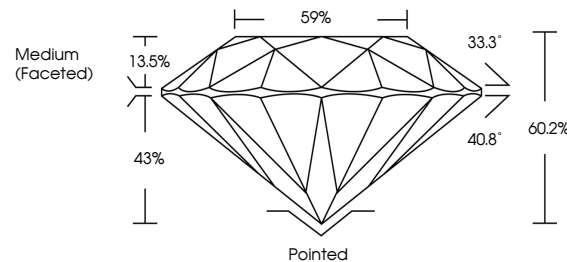
Polish	EXCELLENT
Symmetry	EXCELLENT
Fluorescence	NONE
Inscription(s)	15 LG578350856

Comments: As Grown - No indication of post-growth treatment.
This Laboratory Grown Diamond was created by High Pressure High Temperature (HPHT) growth process.
Type II

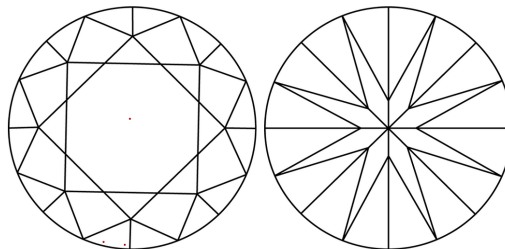
LABORATORY GROWN DIAMOND REPORT

LG578350856
Report verification at igi.org

PROPORTIONS



CLARITY CHARACTERISTICS



KEY TO SYMBOLS

Red symbols indicate internal characteristics.
Green symbols indicate external characteristics.

LABORATORY GROWN
DIAMOND REPORT

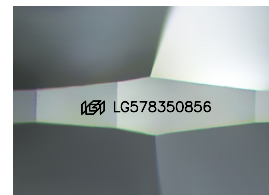
GRADING SCALES

CLARITY

IF	VVS ¹⁻²	VS ¹⁻²	SI ¹⁻²	I ¹⁻³
Internally Flawless	Very Very Slightly Included	Very Slightly Included	Slightly Included	Included

COLOR

D E F G H I J Faint Very Light Light



Sample Image Used



© IGI 2020, International Gemological Institute

FD - 10 20

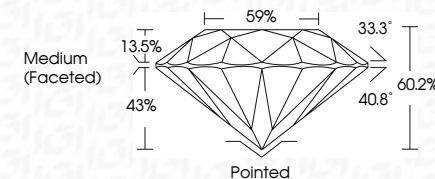
www.igi.org

LABORATORY GROWN DIAMOND REPORT

April 27, 2023	
IGI Report Number	LG578350856
Description	LABORATORY GROWN DIAMOND
Shape and Cutting Style	ROUND BRILLIANT
Measurements	7.06 - 7.10 X 4.27 MM

GRADING RESULTS

Carat Weight	1.32 CARAT
Color Grade	F
Clarity Grade	VVS 1
Cut Grade	IDEAL



ADDITIONAL GRADING INFORMATION

Polish	EXCELLENT
Symmetry	EXCELLENT
Fluorescence	NONE
Inscription(s)	LG LG578350856
Comments: As Grown - No indication of post-growth treatment.	
This Laboratory Grown Diamond was created by High Pressure High Temperature (HPHT) growth process.	
Type II	



IG

April 27, 2023	G Report No LG578350865	
ROUND BRILLIANT	1.32 CARAT	
7.06 - 7.10 X 4.27 MM	F	
Carat Weight	VVS 1	
Color Grade	IDEAL	
Cut Grade	60.2%	
Table	59%	
Girdle	Medium (Faceted)	
Culet	Pointed	
Polish	EXCELLENT	
Symmetry	EXCELLENT	
Fluorescence	NONE	
Inscriptions(s)	4681 LG578350865	
<p>Comments: 1 - No indication of post-growth treatment.</p> <p>This Laboratory Growth Diamond was created by High Pressure High Temperature (HPHT) growth process.</p> <p>Type II</p>		