



ELECTRONIC COPY

LABORATORY GROWN DIAMOND REPORT

| | |
|-------------------------|-----------------------------|
| May 8, 2023 | |
| IGI Report Number | LG578353328 |
| Description | LABORATORY GROWN DIAMOND |
| Shape and Cutting Style | ROUND BRILLIANT |
| Measurements | 10.27 - 10.33 X 6.36 MM |

GRADING RESULTS

| | |
|---------------|-------------|
| Carat Weight | 4.15 CARATS |
| Color Grade | E |
| Clarity Grade | VVS 1 |
| Cut Grade | IDEAL |

ADDITIONAL GRADING INFORMATION

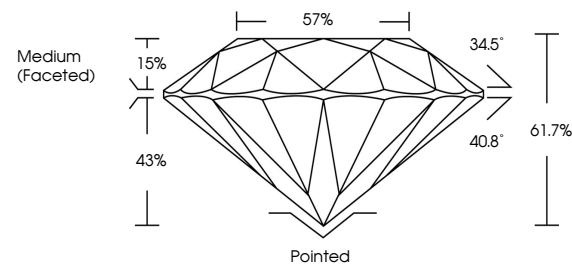
| | |
|----------------|-----------------|
| Polish | EXCELLENT |
| Symmetry | EXCELLENT |
| Fluorescence | NONE |
| Inscription(s) | 151 LG578353328 |

Comments: As Grown - No indication of post-growth treatment.
This Laboratory Grown Diamond was created by High Pressure High Temperature (HPHT) growth process.
Type II

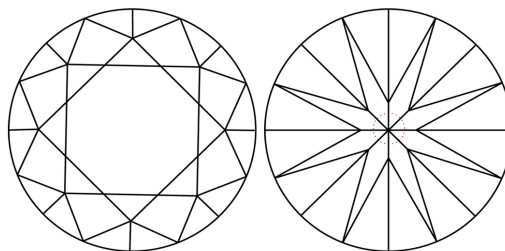
LABORATORY GROWN DIAMOND REPORT

LG578353328
Report verification at igi.org

PROPORTIONS



CLARITY CHARACTERISTICS



KEY TO SYMBOLS

Red symbols indicate internal characteristics.
Green symbols indicate external characteristics.

LABORATORY GROWN
DIAMOND REPORT

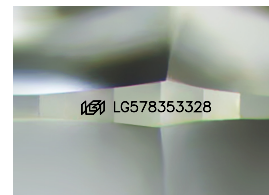
GRADING SCALES

CLARITY

| IF | VVS ¹⁻² | VS ¹⁻² | SI ¹⁻² | I ¹⁻³ |
|---------------------|-----------------------------|------------------------|-------------------|------------------|
| Internally Flawless | Very Very Slightly Included | Very Slightly Included | Slightly Included | Included |

COLOR

D E F G H I J Faint Very Light Light



Sample Image Used

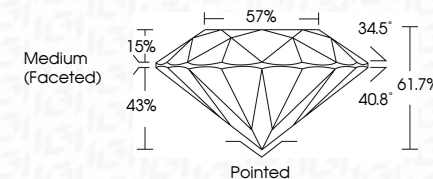


© IGI 2020, International Gemological Institute

FD - 10 20

LABORATORY GROWN DIAMOND REPORT

| | |
|-------------------------|-----------------------------|
| May 8, 2023 | |
| IGI Report Number | LG578353328 |
| Description | LABORATORY GROWN DIAMOND |
| Shape and Cutting Style | ROUND BRILLIANT |
| Measurements | 10.27 - 10.33 X 6.36 MM |
| GRADING RESULTS | |
| Carat Weight | 4.15 CARATS |
| Color Grade | E |
| Clarity Grade | VVS 1 |
| Cut Grade | IDEAL |



ADDITIONAL GRADING INFORMATION

| | |
|--|--|
| Polish | EXCELLENT |
| Symmetry | EXCELLENT |
| Fluorescence | NONE |
| Inscription(s) |  LG5783553328 |
| Comments: As Grown - No indication of post-growth treatment. | |
| This Laboratory Grown Diamond was created by High Pressure High Temperature (HPHT) growth process. | |
| Type II | |



| | |
|-------------------------|---|
| May 8, 2023 | IGI Report No. IGS7935328 |
| ROUND BRILLIANT | |
| 10.27 - 10.33 X 6.36 MM | 4.15 CARATS |
| Color: Weight | E |
| Color: Grade | VVS 1 |
| Clarity: Grade | IDEAL |
| Cut: Grade | 61.7% |
| Depth | 57% |
| Table | |
| Girdle | Medium (Faceted) |
| Fluorescence | Ported |
| Symmetry | EXCELLENT |
| Inscriptions | NONE |
| | IGI IGS7935328 |
| Comments: | |
| | None - No indication of post-growth treatment. |
| | The Laboratory Grown Diamond was created by High Pressure High Temperature (HPHT) growth process. |