



ELECTRONIC COPY

LABORATORY GROWN DIAMOND REPORT

LG579359599

Report verification at igi.org

**LABORATORY GROWN
DIAMOND REPORT**

LABORATORY GROWN DIAMOND REPORT

LABORATORY GROWN DIAMOND REPORT

April 29, 2023
 IGI Report Number **LG579359599**
 Description **LABORATORY GROWN
DIAMOND**
 Shape and Cutting Style **PENTAGON STEP CUT**
 Measurements **11.32 X 6.65 X 3.92 MM**

GRADING RESULTS

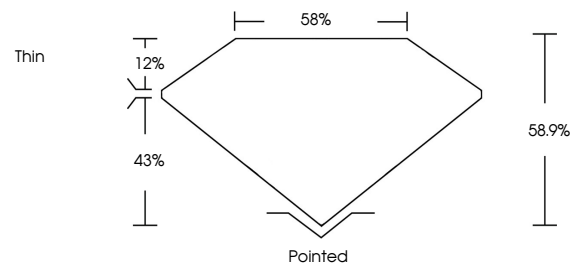
Carat Weight **2.04 CARATS**
 Color Grade **D**
 Clarity Grade **VS 2**

ADDITIONAL GRADING INFORMATION

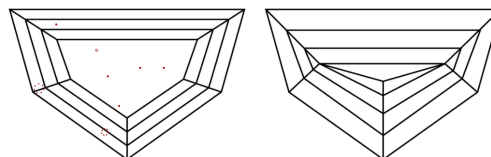
Polish **EXCELLENT**
 Symmetry **EXCELLENT**
 Fluorescence **NONE**
 Inscription(s) **IGI LG579359599**

Comments: This Laboratory Grown Diamond was created by Chemical Vapor Deposition (CVD) growth process and may include post-growth treatment. Type IIa

PROPORTIONS



CLARITY CHARACTERISTICS



KEY TO SYMBOLS

Red symbols indicate internal characteristics.
 Green symbols indicate external characteristics.

GRADING SCALES

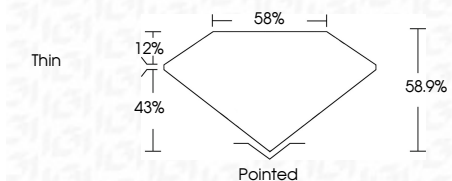
CLARITY

IF	VVS ¹⁻²	VS ¹⁻²	SI ¹⁻²	I ¹⁻³
Internally Flawless	Very Very Slightly Included	Very Slightly Included	Slightly Included	Included

COLOR

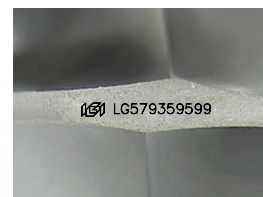
D	E	F	G	H	I	J	Faint	Very Light	Light
---	---	---	---	---	---	---	-------	------------	-------

April 29, 2023
 IGI Report Number **LG579359599**
 Description **LABORATORY GROWN
DIAMOND**
 Shape and Cutting Style **PENTAGON STEP CUT**
 Measurements **11.32 X 6.65 X 3.92 MM**
GRADING RESULTS
 Carat Weight **2.04 CARATS**
 Color Grade **D**
 Clarity Grade **VS 2**



ADDITIONAL GRADING INFORMATION

Polish **EXCELLENT**
 Symmetry **EXCELLENT**
 Fluorescence **NONE**
 Inscription(s) **IGI LG579359599**
 Comments: This Laboratory Grown Diamond was created by Chemical Vapor Deposition (CVD) growth process and may include post-growth treatment. Type IIa



Sample Image Used



April 29, 2023
 IGI Report No LG579359599
PENTAGON STEP CUT
 11.32 X 6.65 X 3.92 MM
 2.04 CARATS
 D
 VS 2
 58.9%
 58%
 Thin
 Pointed
 EXCELLENT
 EXCELLENT
 NONE
 IGI LG579359599
 Comments: This Laboratory Grown Diamond was created by Chemical Vapor Deposition (CVD) growth process and may include post-growth treatment. Type IIa