



**ELECTRONIC COPY**

**LABORATORY GROWN DIAMOND REPORT**

April 29, 2023  
 IGI Report Number **LG579367624**  
 Description **LABORATORY GROWN  
DIAMOND**  
 Shape and Cutting Style **ROUND BRILLIANT**  
 Measurements **7.49 - 7.52 X 4.58 MM**

**GRADING RESULTS**

Carat Weight **1.56 CARAT**  
 Color Grade **E**  
 Clarity Grade **VS 2**  
 Cut Grade **IDEAL**

**ADDITIONAL GRADING INFORMATION**

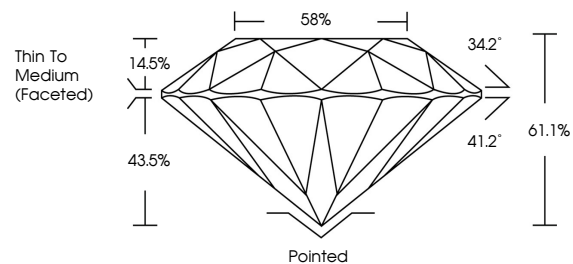
Polish **EXCELLENT**  
 Symmetry **EXCELLENT**  
 Fluorescence **NONE**  
 Inscription(s) **LG579367624**

Comments: HEARTS & ARROWS  
 This Laboratory Grown Diamond was created by  
 Chemical Vapor Deposition (CVD) growth process and  
 may include post-growth treatment.  
 Type IIa

**LABORATORY GROWN DIAMOND REPORT**

**LG579367624**  
 Report verification at [igi.org](http://igi.org)

**PROPORTIONS**



**CLARITY CHARACTERISTICS**



**KEY TO SYMBOLS**

Red symbols indicate internal characteristics.  
 Green symbols indicate external characteristics.



[www.igi.org](http://www.igi.org)

**LABORATORY GROWN  
DIAMOND REPORT**

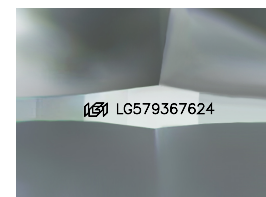
**GRADING SCALES**

**CLARITY**

| IF                     | VVS <sup>1-2</sup>             | VS <sup>1-2</sup>         | SI <sup>1-2</sup>    | I <sup>1-3</sup> |
|------------------------|--------------------------------|---------------------------|----------------------|------------------|
| Internally<br>Flawless | Very Very<br>Slightly Included | Very<br>Slightly Included | Slightly<br>Included | Included         |

**COLOR**

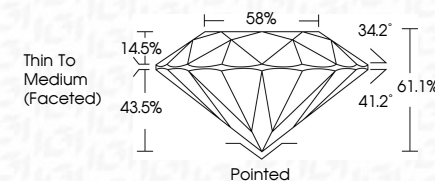
| D | E | F | G | H | I | J | Faint | Very Light | Light |
|---|---|---|---|---|---|---|-------|------------|-------|
|---|---|---|---|---|---|---|-------|------------|-------|



Sample Image Used

**LABORATORY GROWN DIAMOND REPORT**

April 29, 2023  
 IGI Report Number **LG579367624**  
 Description **LABORATORY GROWN  
DIAMOND**  
 Shape and Cutting Style **ROUND BRILLIANT**  
 Measurements **7.49 - 7.52 X 4.58 MM**  
**GRADING RESULTS**  
 Carat Weight **1.56 CARAT**  
 Color Grade **E**  
 Clarity Grade **VS 2**  
 Cut Grade **IDEAL**



**ADDITIONAL GRADING INFORMATION**

Polish **EXCELLENT**  
 Symmetry **EXCELLENT**  
 Fluorescence **NONE**  
 Inscription(s) **LG579367624**  
 Comments: HEARTS & ARROWS  
 This Laboratory Grown Diamond was created by  
 Chemical Vapor Deposition (CVD) growth process and  
 may include post-growth treatment.  
 Type IIa



|                 |                           |             |           |       |       |        |       |                          |          |              |                 |   |             |
|-----------------|---------------------------|-------------|-----------|-------|-------|--------|-------|--------------------------|----------|--------------|-----------------|---|-------------|
| April 29, 2023  | IGI Report No LG579367624 | 1.56 CARAT  | E         | VS 2  | IDEAL | 61.1%  | 58%   | Thin To Medium (Faceted) | Pointed  | EXCELLENT    | EXCELLENT       | NONE  | LG579367624 |
| ROUND BRILLIANT | 7.49 - 7.52 X 4.58 MM     | Color Grade | Cut Grade | Depth | Table | Girdle | Culet | Polish                   | Symmetry | Fluorescence | Inscriptions(s) | Comments: HEARTS & ARROWS<br>This Laboratory Grown Diamond was created by Chemical Vapor Deposition (CVD) growth process and may include post-growth treatment.<br>Type IIa |             |

