



# INTERNATIONAL GEMOLOGICAL INSTITUTE

ELECTRONIC COPY

## LABORATORY GROWN DIAMOND REPORT

LG579376378

### LABORATORY GROWN DIAMOND REPORT

#### IGI LABORATORY GROWN DIAMOND IDENTIFICATION REPORT

May 8, 2023  
IGI Report Number LG579376378  
Description LABORATORY GROWN DIAMOND  
Shape and Cutting Style ROUND BRILLIANT  
Measurements 5.16 - 5.20 X 3.14 MM

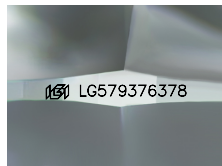
#### GRADING RESULTS

Carat Weight 0.51 CARAT  
Color Grade D  
Clarity Grade VVS 2  
Cut Grade IDEAL

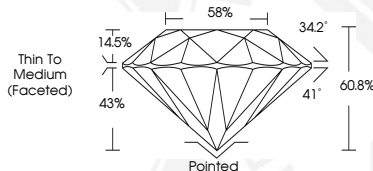
#### ADDITIONAL GRADING INFORMATION

Polish EXCELLENT  
Symmetry EXCELLENT  
Fluorescence NONE  
Inscription(s) IGI LG579376378

Comments: As Grown - No indication of post-growth treatment.  
This Laboratory Grown Diamond was created by High Pressure High  
Temperature (HPHT) growth process.  
Type II



Sample Image Used



#### IGI LABORATORY GROWN DIAMOND ID REPORT

May 8, 2023  
IGI Report Number LG579376378  
ROUND BRILLIANT  
5.16 - 5.20 X 3.14 MM  
Carat Weight 0.51 CARAT  
Color Grade D  
Clarity Grade VVS 2  
Cut Grade IDEAL  
Polish EXCELLENT  
Symmetry EXCELLENT  
Fluorescence NONE  
Inscription(s) IGI LG579376378

Comments: As Grown - No  
indication of post-growth  
treatment. This Laboratory Grown  
Diamond was created by High  
Pressure High Temperature (HPHT)  
growth process. Type II

#### IGI LABORATORY GROWN DIAMOND ID REPORT

May 8, 2023  
IGI Report Number LG579376378  
ROUND BRILLIANT  
5.16 - 5.20 X 3.14 MM  
Carat Weight 0.51 CARAT  
Color Grade D  
Clarity Grade VVS 2  
Cut Grade IDEAL  
Polish EXCELLENT  
Symmetry EXCELLENT  
Fluorescence NONE  
Inscription(s) IGI LG579376378

Comments: As Grown - No  
indication of post-growth  
treatment. This Laboratory Grown  
Diamond was created by High  
Pressure High Temperature (HPHT)  
growth process. Type II



THIS DOCUMENT WAS PRODUCED WITH THE FOLLOWING SECURITY MEASURES: SPECIAL DOCUMENT PAPER, INK SCREENS, WATERMARK, BACKGROUND DESIGN, HOLOGRAM AND OTHER SECURITY FEATURES NOT LISTED AND DO EXCEED DOCUMENT SECURITY INDUSTRY GUIDELINES.

For terms & conditions and to verify this report, please visit [www.igi.org](http://www.igi.org)