



**ELECTRONIC COPY**

LG579377469

Report verification at [igi.org](http://igi.org)

**LABORATORY GROWN DIAMOND REPORT**

May 12, 2023  
 IGI Report Number **LG579377469**  
 Description **LABORATORY GROWN  
DIAMOND**  
 Shape and Cutting Style **CUT CORNERED RECTANGULAR  
MODIFIED BRILLIANT**  
 Measurements **9.94 X 7.18 X 4.92 MM**

**GRADING RESULTS**

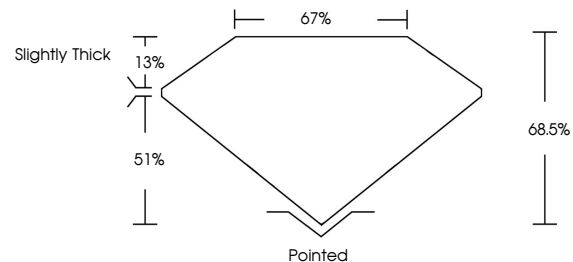
Carat Weight **3.01 CARATS**  
 Color Grade **F**  
 Clarity Grade **SI 1**

**ADDITIONAL GRADING INFORMATION**

Polish **EXCELLENT**  
 Symmetry **EXCELLENT**  
 Fluorescence **NONE**  
 Inscription(s) **IGI LG579377469**

Comments: This Laboratory Grown Diamond was created by Chemical Vapor Deposition (CVD) growth process and may include post-growth treatment. Type IIa

**PROPORTIONS**



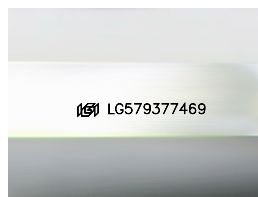
**GRADING SCALES**

**CLARITY**

| IF                  | VVS <sup>1-2</sup>          | VS <sup>1-2</sup>      | SI <sup>1-2</sup> | I <sup>1-3</sup> |
|---------------------|-----------------------------|------------------------|-------------------|------------------|
| Internally Flawless | Very Very Slightly Included | Very Slightly Included | Slightly Included | Included         |

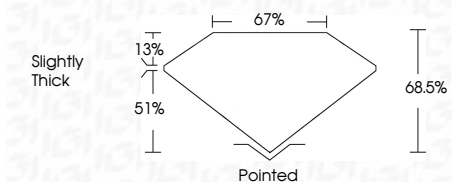
**COLOR**

| D | E | F | G | H | I | J | Faint | Very Light | Light |
|---|---|---|---|---|---|---|-------|------------|-------|
|---|---|---|---|---|---|---|-------|------------|-------|



Sample Image Used

May 12, 2023  
 IGI Report Number **LG579377469**  
 Description **LABORATORY GROWN  
DIAMOND**  
 Shape and Cutting Style **CUT CORNERED  
RECTANGULAR MODIFIED  
BRILLIANT**  
 Measurements **9.94 X 7.18 X 4.92 MM**  
**GRADING RESULTS**  
 Carat Weight **3.01 CARATS**  
 Color Grade **F**  
 Clarity Grade **SI 1**



**ADDITIONAL GRADING INFORMATION**

Polish **EXCELLENT**  
 Symmetry **EXCELLENT**  
 Fluorescence **NONE**  
 Inscription(s) **IGI LG579377469**  
 Comments: This Laboratory Grown Diamond was created by Chemical Vapor Deposition (CVD) growth process and may include post-growth treatment. Type IIa



May 12, 2023  
 IGI Report No LG579377469  
**CUT CORNERED RECT. MODIFIED BRILLIANT**  
 9.94 X 7.18 X 4.92 MM  
 Carat Weight **3.01 CARATS**  
 Color Grade **F**  
 Clarity Grade **SI 1**  
 Depth **68.5%**  
 Table **13%**  
 Girdle **67%**  
 Slightly Thick  
 Culet **Pointed**  
 Polish **EXCELLENT**  
 Symmetry **EXCELLENT**  
 Fluorescence **NONE**  
 Inscription(s) **IGI LG579377469**

Comments: This Laboratory Grown Diamond was created by Chemical Vapor Deposition (CVD) growth process and may include post-growth treatment. Type IIa