



ELECTRONIC COPY

LG579378989

Report verification at igi.org

LABORATORY GROWN DIAMOND REPORT

May 24, 2023
 IGI Report Number **LG579378989**
 Description **LABORATORY GROWN
DIAMOND**
 Shape and Cutting Style **CUT CORNERED RECTANGULAR
MODIFIED BRILLIANT**
 Measurements **11.36 X 8.20 X 5.70 MM**

GRADING RESULTS

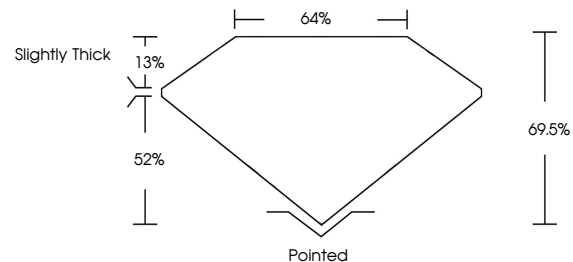
Carat Weight **4.52 CARATS**
 Color Grade **H**
 Clarity Grade **VS 1**

ADDITIONAL GRADING INFORMATION

Polish **EXCELLENT**
 Symmetry **EXCELLENT**
 Fluorescence **NONE**
 Inscription(s) **LG579378989**

Comments: This Laboratory Grown Diamond was created by Chemical Vapor Deposition (CVD) growth process and may include post-growth treatment. Type IIa

PROPORTIONS



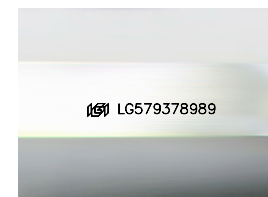
GRADING SCALES

CLARITY

| IF | VVS ¹⁻² | VS ¹⁻² | SI ¹⁻² | I ¹⁻³ |
|---------------------|-----------------------------|------------------------|-------------------|------------------|
| Internally Flawless | Very Very Slightly Included | Very Slightly Included | Slightly Included | Included |

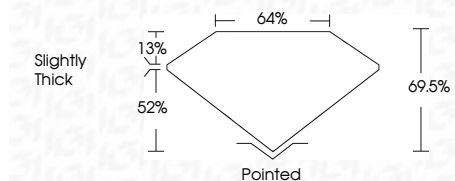
COLOR

| D | E | F | G | H | I | J | Faint | Very Light | Light |
|---|---|---|---|---|---|---|-------|------------|-------|
|---|---|---|---|---|---|---|-------|------------|-------|



Sample Image Used

May 24, 2023
 IGI Report Number **LG579378989**
 Description **LABORATORY GROWN
DIAMOND**
 Shape and Cutting Style **CUT CORNERED
RECTANGULAR MODIFIED
BRILLIANT**
 Measurements **11.36 X 8.20 X 5.70 MM**
GRADING RESULTS
 Carat Weight **4.52 CARATS**
 Color Grade **H**
 Clarity Grade **VS 1**



ADDITIONAL GRADING INFORMATION

Polish **EXCELLENT**
 Symmetry **EXCELLENT**
 Fluorescence **NONE**
 Inscription(s) **LG579378989**
 Comments: This Laboratory Grown Diamond was created by Chemical Vapor Deposition (CVD) growth process and may include post-growth treatment. Type IIa



May 24, 2023
 IGI Report No **LG579378989**
CUT CORNERED RECT. MODIFIED BRILLIANT
11.36 X 8.20 X 5.70 MM
 Carat Weight **4.52 CARATS**
 Color Grade **H**
 Clarity Grade **VS 1**
 Depth **69.5%**
 Table **64%**
 Girdle **Slightly Thick**
 Culet **Pointed**
 Polish **EXCELLENT**
 Symmetry **EXCELLENT**
 Fluorescence **NONE**
 Inscription(s) **LG579378989**
 Comments: This Laboratory Grown Diamond was created by Chemical Vapor Deposition (CVD) growth process and may include post-growth treatment. Type IIa

