



**INTERNATIONAL  
GEMOLOGICAL  
INSTITUTE**

**ELECTRONIC COPY**

**LABORATORY GROWN  
DIAMOND REPORT**

**LG579386404**

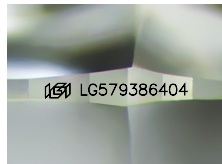
**IGI LABORATORY GROWN  
DIAMOND ID REPORT**

May 2, 2023  
IGI Report Number **LG579386404**  
**ROUND BRILLIANT**  
**6.21 - 6.26 X 3.86 MM**  
Carat Weight 0.92 CARAT  
Color Grade E  
Clarity Grade VS 2  
Cut Grade IDEAL  
Polish EXCELLENT  
Symmetry EXCELLENT  
Fluorescence NONE  
Inscription(s) LG579386404

**LABORATORY GROWN DIAMOND REPORT**

**IGI LABORATORY GROWN DIAMOND IDENTIFICATION REPORT**

May 2, 2023  
IGI Report Number LG579386404  
Description LABORATORY GROWN DIAMOND  
Shape and Cutting Style ROUND BRILLIANT  
Measurements 6.21 - 6.26 X 3.86 MM



Sample Image Used

**GRADING RESULTS**

Carat Weight 0.92 CARAT  
Color Grade E  
Clarity Grade VS 2  
Cut Grade IDEAL

**ADDITIONAL GRADING INFORMATION**

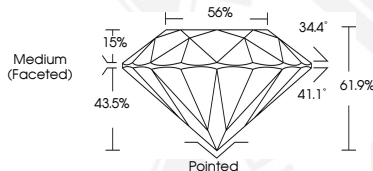
Polish EXCELLENT  
Symmetry EXCELLENT  
Fluorescence NONE  
Inscription(s) LG579386404

Comments: This Laboratory Grown Diamond was created by Chemical Vapor Deposition (CVD) growth process and may include post-growth treatment. Type Ila

**IGI LABORATORY GROWN  
DIAMOND ID REPORT**

May 2, 2023  
IGI Report Number **LG579386404**  
**ROUND BRILLIANT**  
**6.21 - 6.26 X 3.86 MM**  
Carat Weight 0.92 CARAT  
Color Grade E  
Clarity Grade VS 2  
Cut Grade IDEAL  
Polish EXCELLENT  
Symmetry EXCELLENT  
Fluorescence NONE  
Inscription(s) LG579386404

Comments: This Laboratory Grown Diamond was created by Chemical Vapor Deposition (CVD) growth process and may include post-growth treatment. Type Ila



THIS DOCUMENT WAS PRODUCED WITH THE FOLLOWING SECURITY MEASURES: SPECIAL DOCUMENT PAPER, INK SCREENS, WATERMARK, BACKGROUND DESIGN, HOLOGRAM AND OTHER SECURITY FEATURES NOT LISTED AND DO EXCEED DOCUMENT SECURITY INDUSTRY GUIDELINES.

For terms & conditions and to verify this report, please visit [www.igi.org](http://www.igi.org)