



ELECTRONIC COPY

LABORATORY GROWN
DIAMOND REPORT

LG581303790

LABORATORY GROWN DIAMOND REPORT

IGI LABORATORY GROWN DIAMOND IDENTIFICATION REPORT

May 11, 2023	
IGI Report Number	LG581303790
Description	LABORATORY GROWN DIAMOND
Shape and Cutting Style	ROUND BRILLIANT
Measurements	4.88 - 4.92 X 3.06 MM

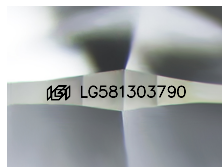
GRADING RESULTS

Carat Weight	0.45 CARAT
Color Grade	G
Clarity Grade	VVS 2
Cut Grade	IDEAL

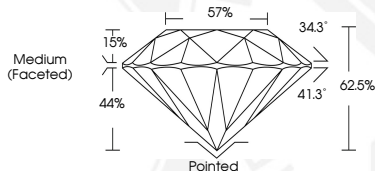
ADDITIONAL GRADING INFORMATION

Polish	EXCELLENT
Symmetry	EXCELLENT
Fluorescence	NONE
Inscription(s)	15 LG581303790

Comments: This Laboratory Grown Diamond was created by Chemical Vapor Deposition (CVD) growth process and may include post-growth treatment.
Type IIa



Sample Image Used



THIS DOCUMENT WAS PRODUCED WITH THE FOLLOWING SECURITY MEASURES: SPECIAL DOCUMENT PAPER, INK SCREENS, WATERMARK, BACKGROUND DESIGNS, HOLOGRAM AND OTHER SECURITY FEATURES NOT LISTED AND DO EXCEED DOCUMENT SECURITY INDUSTRY GUIDELINES

For terms & conditions and to verify this report, please visit www.igi.org

**IGI LABORATORY GROWN
DIAMOND ID REPORT**

May 11, 2023	
IGI Report Number	LG581303790
ROUND BRILLIANT	
4.88 - 4.92 X 3.06 MM	
Carat Weight	0.45 CARAT
Color Grade	G
Clarity Grade	VVS
Cut Grade	IDEAL
Polish	EXCELLENT
Symmetry	EXCELLENT
Fluorescence	NON FLUORESCENT
Inscription(s)	IGI LG581303790

Comments: This Laboratory Grown Diamond was created by Chemical Vapor Deposition (CVD) growth process and may include post-growth treatment. Type IIa

**IGI LABORATORY GROWN
DIAMOND ID REPORT**

May 11, 2023
IGI Report Number **LG581303790**
ROUND BRILLIANT
4.88 - 4.92 X 3.06 MM
Carat Weight 0.45 CARAT
Color Grade ()
Clarity Grade VVS
Cut Grade IDEAL
Polish EXCELLEN
Symmetry EXCELLEN
Fluorescence NON
Inscription(s) (65) LG581303790

Comments: This Laboratory Grown Diamond was created by Chemical Vapor Deposition (CVD) growth process and may include post-growth treatment. Type IIa