



ELECTRONIC COPY

LABORATORY GROWN DIAMOND REPORT

May 16, 2023
 IGI Report Number **LG581312990**
 Description **LABORATORY GROWN
DIAMOND**
 Shape and Cutting Style **CUT CORNERED RECTANGULAR
MODIFIED BRILLIANT**
 Measurements **8.33 X 5.84 X 4.01 MM**

GRADING RESULTS

Carat Weight **1.67 CARAT**
 Color Grade **FANCY VIVID PINK**
 Clarity Grade **VS 1**

ADDITIONAL GRADING INFORMATION

Polish **EXCELLENT**
 Symmetry **EXCELLENT**
 Fluorescence **SLIGHT**
 Inscription(s) **IGI LG581312990**

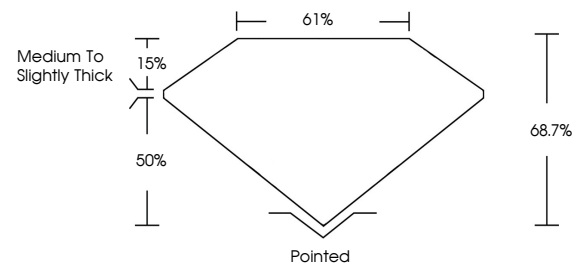
Comments: This Laboratory Grown Diamond was created by Chemical Vapor Deposition (CVD) growth process.
 Indications of post-growth treatment.

Secondary color: Brown

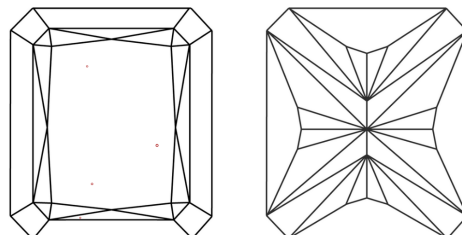
LABORATORY GROWN DIAMOND REPORT

LG581312990
 Report verification at igi.org

PROPORTIONS



CLARITY CHARACTERISTICS



KEY TO SYMBOLS

Red symbols indicate internal characteristics.
 Green symbols indicate external characteristics.

**LABORATORY GROWN
DIAMOND REPORT**

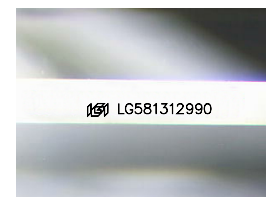
GRADING SCALES

CLARITY

IF	VVS ¹⁻²	VS ¹⁻²	SI ¹⁻²	I ¹⁻³
Internally Flawless	Very Very Slightly Included	Very Slightly Included	Slightly Included	Included

COLOR

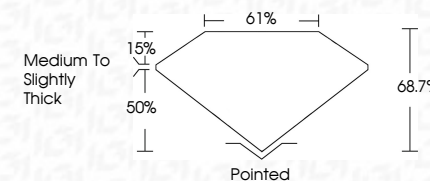
D	E	F	G	H	I	J	Faint	Very Light	Light
Light Tint	Fancy Light	Fancy	Fancy Intense	Fancy Vivid					



Sample Image Used

LABORATORY GROWN DIAMOND REPORT

May 16, 2023
 IGI Report Number **LG581312990**
 Description **LABORATORY GROWN
DIAMOND**
 Shape and Cutting Style **CUT CORNERED
RECTANGULAR MODIFIED
BRILLIANT**
 Measurements **8.33 X 5.84 X 4.01 MM**
GRADING RESULTS
 Carat Weight **1.67 CARAT**
 Color Grade **FANCY VIVID PINK**
 Clarity Grade **VS 1**



ADDITIONAL GRADING INFORMATION

Polish **EXCELLENT**
 Symmetry **EXCELLENT**
 Fluorescence **SLIGHT**
 Inscription(s) **IGI LG581312990**
 Comments: This Laboratory Grown Diamond was created by Chemical Vapor Deposition (CVD) growth process.
 Indications of post-growth treatment.

Secondary color: Brown



IGI



May 16, 2023
 IGI Report No LG581312990
CUT CORNERED RECT. MODIFIED BRILLIANT
8.33 X 5.84 X 4.01 MM
 Carat Weight **1.67 CARAT**
 Color Grade **FANCY VIVID PINK**
 Clarity Grade **VS 1**
 Depth **68.7%**
 Table **61%**
 Girdle **Medium to Slightly Thick**
 Culet **Pointed**
 Polish **EXCELLENT**
 Symmetry **EXCELLENT**
 Fluorescence **SLIGHT**
 Inscription(s) **IGI LG581312990**

Comments: This Laboratory Grown Diamond was created by Chemical Vapor Deposition (CVD) growth process.
 Indications of post-growth treatment.
 Secondary color: Brown