



ELECTRONIC COPY

LABORATORY GROWN DIAMOND REPORT

May 19, 2023
 IGI Report Number **LG581314394**
 Description **LABORATORY GROWN
DIAMOND**
 Shape and Cutting Style **SQUARE CUSHION MODIFIED
BRILLIANT**
 Measurements **9.21 X 8.87 X 5.70 MM**

GRADING RESULTS

Carat Weight **4.14 CARATS**
 Color Grade **FANCY DEEP ORANGE**
 Clarity Grade **VS 1**

ADDITIONAL GRADING INFORMATION

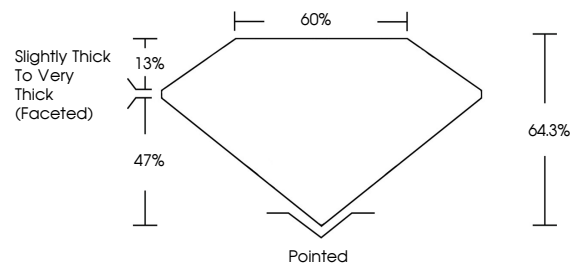
Polish **VERY GOOD**
 Symmetry **EXCELLENT**
 Fluorescence **NONE**
 Inscription(s) **IGI LG581314394**

Comments: This Laboratory Grown Diamond was created by Chemical Vapor Deposition (CVD) growth process.
 Indications of post-growth treatment.

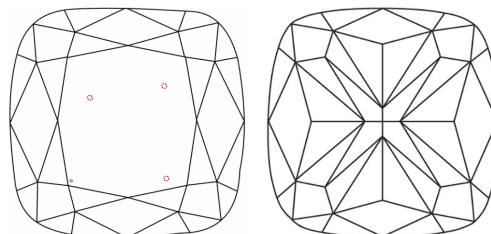
LABORATORY GROWN DIAMOND REPORT

LG581314394
 Report verification at igi.org

PROPORTIONS



CLARITY CHARACTERISTICS



KEY TO SYMBOLS

Red symbols indicate internal characteristics.
 Green symbols indicate external characteristics.

**LABORATORY GROWN
DIAMOND REPORT**

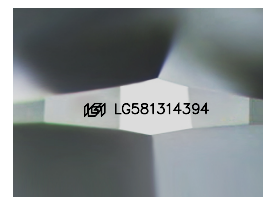
GRADING SCALES

CLARITY

IF	VVS ¹⁻²	VS ¹⁻²	SI ¹⁻²	I ¹⁻³
Internally Flawless	Very Very Slightly Included	Very Slightly Included	Slightly Included	Included

COLOR

D	E	F	G	H	I	J	Faint	Very Light	Light
Light Tint	Fancy Light	Fancy	Fancy Intense	Fancy Vivid					



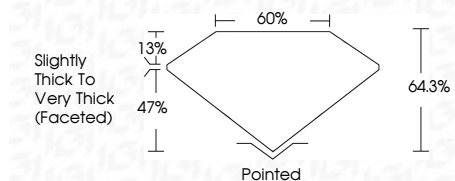
Sample Image Used

LABORATORY GROWN DIAMOND REPORT

May 19, 2023
 IGI Report Number **LG581314394**
 Description **LABORATORY GROWN
DIAMOND**
 Shape and Cutting Style **SQUARE CUSHION MODIFIED
BRILLIANT**
 Measurements **9.21 X 8.87 X 5.70 MM**

GRADING RESULTS

Carat Weight **4.14 CARATS**
 Color Grade **FANCY DEEP ORANGE**
 Clarity Grade **VS 1**



ADDITIONAL GRADING INFORMATION

Polish **VERY GOOD**
 Symmetry **EXCELLENT**
 Fluorescence **NONE**
 Inscription(s) **IGI LG581314394**
 Comments: This Laboratory Grown Diamond was created by Chemical Vapor Deposition (CVD) growth process.
 Indications of post-growth treatment.



IGI

May 19, 2023
 IGI Report No LG581314394
SQUARE CUSHION MODIFIED BRILLIANT
 9.21 X 8.87 X 5.70 MM
 Carat Weight **4.14 CARATS**
 Color Grade **FANCY DEEP ORANGE**
 Clarity Grade **VS 1**
 Depth **64.3%**
 Table **60%**
 Girdle **Slightly Thick To Very Thick (Faceted)**
 Culet **Pointed**
 Polish **VERY GOOD**
 Symmetry **EXCELLENT**
 Fluorescence **NONE**
 Inscription(s) **IGI LG581314394**

Comments: This Laboratory Grown Diamond was created by Chemical Vapor Deposition (CVD) growth process.
 Indications of post-growth treatment.