



ELECTRONIC COPY

LABORATORY GROWN DIAMOND REPORT

May 15, 2023
 IGI Report Number **LG581330916**
 Description **LABORATORY GROWN
DIAMOND**
 Shape and Cutting Style **ROUND BRILLIANT**
 Measurements **8.12 - 8.16 X 5.03 MM**

GRADING RESULTS

Carat Weight **2.06 CARATS**
 Color Grade **E**
 Clarity Grade **INTERNALLY FLAWLESS**
 Cut Grade **IDEAL**

ADDITIONAL GRADING INFORMATION

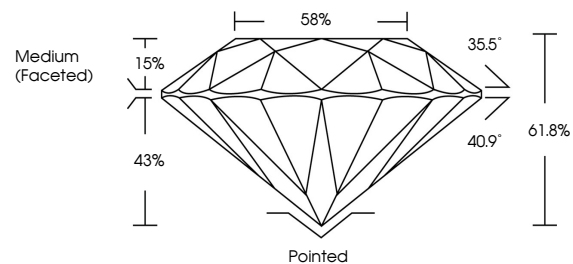
Polish **EXCELLENT**
 Symmetry **EXCELLENT**
 Fluorescence **NONE**
 Inscription(s) **IGI LG581330916**

Comments: As Grown - No indication of post-growth treatment.
 This Laboratory Grown Diamond was created by High Pressure High Temperature (HPHT) growth process.
 Type II

LABORATORY GROWN DIAMOND REPORT

LG581330916
 Report verification at igi.org

PROPORTIONS



CLARITY CHARACTERISTICS



KEY TO SYMBOLS

Red symbols indicate internal characteristics.
 Green symbols indicate external characteristics.

**LABORATORY GROWN
DIAMOND REPORT**

GRADING SCALES

CLARITY

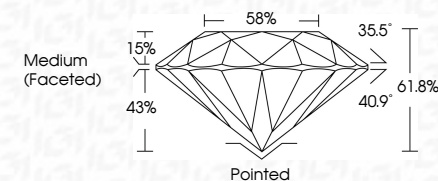
| IF | VVS ¹⁻² | VS ¹⁻² | SI ¹⁻² | I ¹⁻³ |
|---------------------|-----------------------------|------------------------|-------------------|------------------|
| Internally Flawless | Very Very Slightly Included | Very Slightly Included | Slightly Included | Included |

COLOR

| D | E | F | G | H | I | J | Faint | Very Light | Light |
|---|---|---|---|---|---|---|-------|------------|-------|
|---|---|---|---|---|---|---|-------|------------|-------|

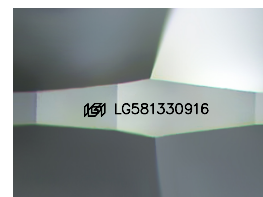
LABORATORY GROWN DIAMOND REPORT

May 15, 2023
 IGI Report Number **LG581330916**
 Description **LABORATORY GROWN
DIAMOND**
 Shape and Cutting Style **ROUND BRILLIANT**
 Measurements **8.12 - 8.16 X 5.03 MM**
GRADING RESULTS
 Carat Weight **2.06 CARATS**
 Color Grade **E**
 Clarity Grade **INTERNALLY FLAWLESS**
 Cut Grade **IDEAL**



ADDITIONAL GRADING INFORMATION

Polish **EXCELLENT**
 Symmetry **EXCELLENT**
 Fluorescence **NONE**
 Inscription(s) **IGI LG581330916**
 Comments: As Grown - No indication of post-growth treatment.
 This Laboratory Grown Diamond was created by High Pressure High Temperature (HPHT) growth process.
 Type II



Sample Image Used



IGI

| | | | | |
|-----------------|---------------------------|-----------------|------------------|-----------------|
| May 15, 2023 | IGI Report No LG581330916 | 2.06 CARATS | E | Pointed |
| ROUND BRILLIANT | 8.12 - 8.16 X 5.03 MM | Color Grade | IDEAL | EXCELLENT |
| | | Clarity Grade | 61.8% | EXCELLENT |
| | | Depth | 58% | NONE |
| | | Table | Medium (Faceted) | IGI LG581330916 |
| | | Girdle | | |
| | | Culet | | |
| | | Polish | | |
| | | Symmetry | | |
| | | Fluorescence | | |
| | | Inscriptions(s) | | |

Comments: As Grown - No indication of post-growth treatment.
 This Laboratory Grown Diamond was created by High Pressure High Temperature (HPHT) growth process.
 Type II