



ELECTRONIC COPY

LABORATORY GROWN DIAMOND REPORT

May 10, 2023
 IGI Report Number **LG581341303**
 Description **LABORATORY GROWN
DIAMOND**
 Shape and Cutting Style **ROUND BRILLIANT**
 Measurements **10.92 - 10.98 X 6.76 MM**

GRADING RESULTS

Carat Weight **5.05 CARATS**
 Color Grade **D**
 Clarity Grade **VVS 2**
 Cut Grade **IDEAL**

ADDITIONAL GRADING INFORMATION

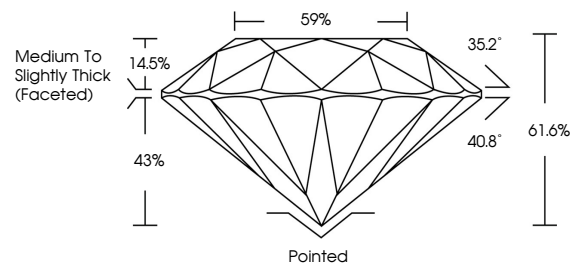
Polish **EXCELLENT**
 Symmetry **EXCELLENT**
 Fluorescence **NONE**
 Inscription(s) **IGI LG581341303**

Comments: HEARTS & ARROWS
 As Grown - No indication of post-growth treatment.
 This Laboratory Grown Diamond was created by High Pressure High Temperature (HPHT) growth process.
 Type II

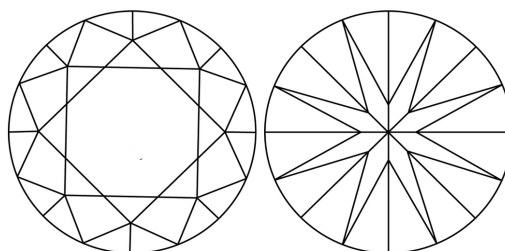
LABORATORY GROWN DIAMOND REPORT

LG581341303
 Report verification at igi.org

PROPORTIONS



CLARITY CHARACTERISTICS



KEY TO SYMBOLS

Red symbols indicate internal characteristics.
 Green symbols indicate external characteristics.



www.igi.org

**LABORATORY GROWN
DIAMOND REPORT**

GRADING SCALES

CLARITY

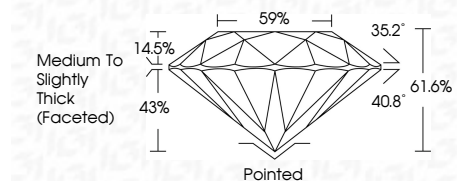
IF	VVS ¹⁻²	VS ¹⁻²	SI ¹⁻²	I ¹⁻³
Internally Flawless	Very Very Slightly Included	Very Slightly Included	Slightly Included	Included

COLOR

D	E	F	G	H	I	J	Faint	Very Light	Light

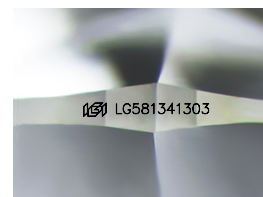
LABORATORY GROWN DIAMOND REPORT

May 10, 2023
 IGI Report Number **LG581341303**
 Description **LABORATORY GROWN
DIAMOND**
 Shape and Cutting Style **ROUND BRILLIANT**
 Measurements **10.92 - 10.98 X 6.76 MM**
GRADING RESULTS
 Carat Weight **5.05 CARATS**
 Color Grade **D**
 Clarity Grade **VVS 2**
 Cut Grade **IDEAL**



ADDITIONAL GRADING INFORMATION

Polish **EXCELLENT**
 Symmetry **EXCELLENT**
 Fluorescence **NONE**
 Inscription(s) **IGI LG581341303**
 Comments: HEARTS & ARROWS
 As Grown - No indication of post-growth treatment.
 This Laboratory Grown Diamond was created by High Pressure High Temperature (HPHT) growth process.
 Type II



Sample Image Used



IGI

May 10, 2023	IGI Report No LG581341303	5.05 CARATS	D
ROUND BRILLIANT	10.92 - 10.98 X 6.76 MM	VVS 2	IDEAL
Carat Weight	Color Grade	Depth	61.6%
Clarity Grade	Cut Grade	Table	59%
Fluorescence	Grade	Medium To Slightly Thick (Faceted)	Pointed
Inscription(s)	Culet	Polish	EXCELLENT
	Symmetry	Symmetry	EXCELLENT
	Fluorescence	Fluorescence	NONE
	Inscription(s)	Inscription(s)	IGI LG581341303

Comments: HEARTS & ARROWS
 As Grown - No indication of post-growth treatment.
 This Laboratory Grown Diamond was created by High Pressure High Temperature (HPHT) growth process.
 Type II