



**ELECTRONIC COPY**

**LABORATORY GROWN DIAMOND REPORT**

May 29, 2023  
 IGI Report Number **LG582357233**  
 Description **LABORATORY GROWN  
DIAMOND**  
 Shape and Cutting Style **CUT CORNERED RECTANGULAR  
MODIFIED BRILLIANT**  
 Measurements **7.42 X 5.03 X 3.48 MM**

**GRADING RESULTS**

Carat Weight **1.22 CARAT**  
 Color Grade **FANCY VIVID PINK**  
 Clarity Grade **VS 1**

**ADDITIONAL GRADING INFORMATION**

Polish **EXCELLENT**  
 Symmetry **VERY GOOD**  
 Fluorescence **SLIGHT**  
 Inscription(s) **IGI LG582357233**

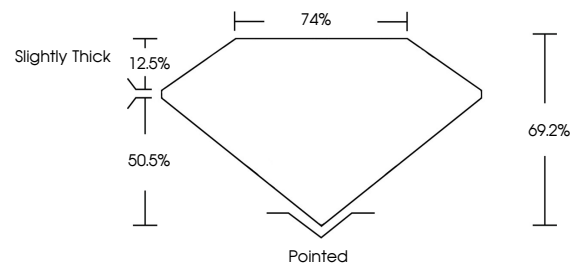
Comments: This Laboratory Grown Diamond was created by Chemical Vapor Deposition (CVD) growth process.  
 Indications of post-growth treatment.

Secondary color: Brown

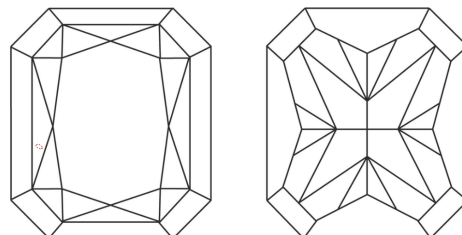
**LABORATORY GROWN DIAMOND REPORT**

**LG582357233**  
 Report verification at [igi.org](http://igi.org)

**PROPORTIONS**



**CLARITY CHARACTERISTICS**



**KEY TO SYMBOLS**

Red symbols indicate internal characteristics.  
 Green symbols indicate external characteristics.

**LABORATORY GROWN  
DIAMOND REPORT**

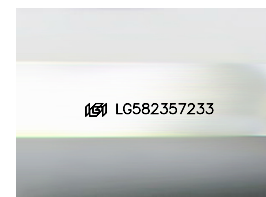
**GRADING SCALES**

**CLARITY**

IF	VVS <sup>1-2</sup>	VS <sup>1-2</sup>	SI <sup>1-2</sup>	I <sup>1-3</sup>
Internally Flawless	Very Very Slightly Included	Very Slightly Included	Slightly Included	Included

**COLOR**

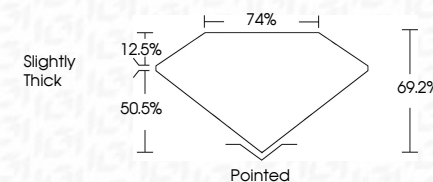
D	E	F	G	H	I	J	Faint	Very Light	Light
Light Tint	Fancy Light	Fancy	Fancy Intense	Fancy Vivid					



Sample Image Used

**LABORATORY GROWN DIAMOND REPORT**

May 29, 2023  
 IGI Report Number **LG582357233**  
 Description **LABORATORY GROWN  
DIAMOND**  
 Shape and Cutting Style **CUT CORNERED  
RECTANGULAR MODIFIED  
BRILLIANT**  
 Measurements **7.42 X 5.03 X 3.48 MM**  
**GRADING RESULTS**  
 Carat Weight **1.22 CARAT**  
 Color Grade **FANCY VIVID PINK**  
 Clarity Grade **VS 1**



**ADDITIONAL GRADING INFORMATION**

Polish **EXCELLENT**  
 Symmetry **VERY GOOD**  
 Fluorescence **SLIGHT**  
 Inscription(s) **IGI LG582357233**  
 Comments: This Laboratory Grown Diamond was created by Chemical Vapor Deposition (CVD) growth process.  
 Indications of post-growth treatment.

Secondary color: Brown



May 29, 2023  
 IGI Report No. LG582357233  
**CUT CORNERED RECT. MODIFIED BRILLIANT**  
 7.42 X 5.03 X 3.48 MM  
 Carat Weight 1.22 CARAT  
 Color Grade FANCY VIVID PINK  
 Clarity Grade VS 1  
 Depth 69.2%  
 Table 74%  
 Girdle Slightly Thick  
 Culet Pointed  
 Polish EXCELLENT  
 Symmetry VERY GOOD  
 Fluorescence SLIGHT  
 Inscription(s) IGI LG582357233

Comments: This Laboratory Grown Diamond was created by Chemical Vapor Deposition (CVD) growth process.  
 Indications of post-growth treatment.  
 Secondary color: Brown