



**INTERNATIONAL
GEMOLOGICAL
INSTITUTE**

ELECTRONIC COPY

**LABORATORY GROWN
DIAMOND REPORT**

LG582357722

**IGI LABORATORY GROWN
DIAMOND ID REPORT**

May 30, 2023

IGI Report Number **LG582357722**

CUSHION MODIFIED BRILLIANT

4.56 X 3.43 X 2.41 MM

Carat Weight	0.34 CARAT
Color Grade	FANCY VIVID GREEN
Clarity Grade	VS 1
Polish	VERY GOOD
Symmetry	VERY GOOD
Fluorescence	NONE
Inscription(s)	LG582357722

Comments: This Laboratory Grown Diamond was created by High Pressure High Temperature (HPHT) growth process. Indications of post-growth treatment. Secondary color: Yellow

LABORATORY GROWN DIAMOND REPORT

IGI LABORATORY GROWN DIAMOND IDENTIFICATION REPORT

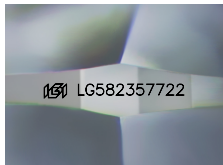
May 30, 2023

IGI Report Number **LG582357722**

Description **LABORATORY GROWN DIAMOND**

Shape and Cutting Style **CUSHION MODIFIED BRILLIANT**

Measurements **4.56 X 3.43 X 2.41 MM**



Sample Image Used

GRADING RESULTS

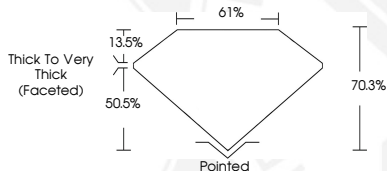
Carat Weight	0.34 CARAT
Color Grade	FANCY VIVID GREEN
Clarity Grade	VS 1

ADDITIONAL GRADING INFORMATION

Polish	VERY GOOD
Symmetry	VERY GOOD
Fluorescence	NONE
Inscription(s)	LG582357722

Comments: This Laboratory Grown Diamond was created by High Pressure High Temperature (HPHT) growth process. Indications of post-growth treatment.

Secondary color: Yellow



**IGI LABORATORY GROWN
DIAMOND ID REPORT**

May 30, 2023

IGI Report Number **LG582357722**

CUSHION MODIFIED BRILLIANT

4.56 X 3.43 X 2.41 MM

Carat Weight	0.34 CARAT
Color Grade	FANCY VIVID GREEN
Clarity Grade	VS 1
Polish	VERY GOOD
Symmetry	VERY GOOD
Fluorescence	NONE
Inscription(s)	LG582357722

Comments: This Laboratory Grown Diamond was created by High Pressure High Temperature (HPHT) growth process. Indications of post-growth treatment. Secondary color: Yellow

THIS DOCUMENT WAS PRODUCED WITH THE FOLLOWING SECURITY MEASURES: SPECIAL DOCUMENT PAPER, INK SCREENS, WATERMARK, BACKGROUND DESIGN, HOLOGRAM AND OTHER SECURITY FEATURES NOT LISTED AND DO EXCEED DOCUMENT SECURITY INDUSTRY GUIDELINES.

For terms & conditions and to verify this report, please visit www.igi.org