



ELECTRONIC COPY

LABORATORY GROWN DIAMOND REPORT

June 1, 2023
 IGI Report Number **LG582359458**
 Description **LABORATORY GROWN
DIAMOND**
 Shape and Cutting Style **SQUARE CUSHION BRILLIANT**
 Measurements **9.36 X 9.24 X 6.16 MM**

GRADING RESULTS

Carat Weight **4.36 CARATS**
 Color Grade **FANCY VIVID PINK**
 Clarity Grade **VS 1**

ADDITIONAL GRADING INFORMATION

Polish **EXCELLENT**
 Symmetry **EXCELLENT**
 Fluorescence **SLIGHT**
 Inscription(s) **IGI LG582359458**

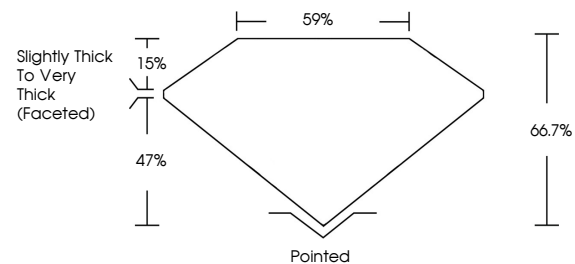
Comments: This Laboratory Grown Diamond was created by Chemical Vapor Deposition (CVD) growth process.
 Indications of post-growth treatment.

Secondary color: Brown

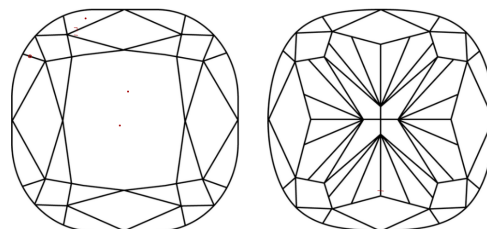
LABORATORY GROWN DIAMOND REPORT

LG582359458
 Report verification at igi.org

PROPORTIONS



CLARITY CHARACTERISTICS



KEY TO SYMBOLS

Red symbols indicate internal characteristics.
 Green symbols indicate external characteristics.

**LABORATORY GROWN
DIAMOND REPORT**

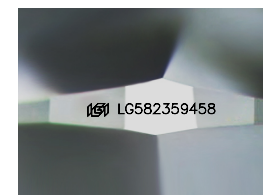
GRADING SCALES

CLARITY

IF	VVS ¹⁻²	VS ¹⁻²	SI ¹⁻²	I ¹⁻³
Internally Flawless	Very Very Slightly Included	Very Slightly Included	Slightly Included	Included

COLOR

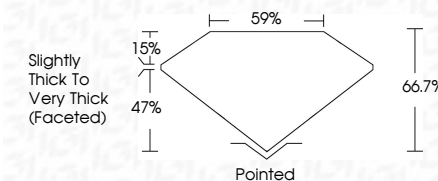
D	E	F	G	H	I	J	Faint	Very Light	Light
Light Tint	Fancy Light	Fancy	Fancy Intense	Fancy Vivid					



Sample Image Used

LABORATORY GROWN DIAMOND REPORT

June 1, 2023
 IGI Report Number **LG582359458**
 Description **LABORATORY GROWN
DIAMOND**
 Shape and Cutting Style **SQUARE CUSHION BRILLIANT**
 Measurements **9.36 X 9.24 X 6.16 MM**
GRADING RESULTS
 Carat Weight **4.36 CARATS**
 Color Grade **FANCY VIVID PINK**
 Clarity Grade **VS 1**



ADDITIONAL GRADING INFORMATION

Polish **EXCELLENT**
 Symmetry **EXCELLENT**
 Fluorescence **SLIGHT**
 Inscription(s) **IGI LG582359458**
 Comments: This Laboratory Grown Diamond was created by Chemical Vapor Deposition (CVD) growth process.
 Indications of post-growth treatment.
 Secondary color: Brown



June 1, 2023
 IGI Report No **LG582359458**
SQUARE CUSHION BRILLIANT
 9.36 X 9.24 X 6.16 MM
 Carat Weight **4.36 CARATS**
 Color Grade **FANCY VIVID PINK**
 Clarity Grade **VS 1**
 Depth **66.7%**
 Table **59%**
 Girdle **Slightly Thick To Very Thick (Faceted)**
 Culet **Pointed**
 Polish **EXCELLENT**
 Symmetry **EXCELLENT**
 Fluorescence **SLIGHT**
 Inscription(s) **IGI LG582359458**

Comments: This Laboratory Grown Diamond was created by Chemical Vapor Deposition (CVD) growth process.
 Indications of post-growth treatment.
 Secondary color: Brown

