



**INTERNATIONAL  
GEMOLOGICAL  
INSTITUTE**

**ELECTRONIC COPY**

**LABORATORY GROWN  
DIAMOND REPORT**

**LG582359465**

**IGI LABORATORY GROWN  
DIAMOND ID REPORT**

May 31, 2023

IGI Report Number **LG582359465**

**CUT CORNERED RECTANGULAR  
MODIFIED BRILLIANT**

**5.49 X 4.11 X 2.63 MM**

Carat Weight 0.53 CARAT  
Color Grade FANCY VIVID YELLOW

Clarity Grade VS 1

Polish VERY GOOD

Symmetry VERY GOOD

Fluorescence NONE

Inscription(s) LG582359465

Comments: As Grown - No indication of post-growth treatment. This Laboratory Grown Diamond was created by High Pressure High Temperature (HPHT) growth process.

**LABORATORY GROWN DIAMOND REPORT**

**IGI LABORATORY GROWN DIAMOND IDENTIFICATION REPORT**

May 31, 2023

IGI Report Number LG582359465

Description LABORATORY GROWN DIAMOND  
Shape and Cutting Style CUT CORNERED RECTANGULAR MODIFIED BRILLIANT

Measurements 5.49 X 4.11 X 2.63 MM

**GRADING RESULTS**

Carat Weight 0.53 CARAT

Color Grade FANCY VIVID YELLOW

Clarity Grade VS 1

**ADDITIONAL GRADING INFORMATION**

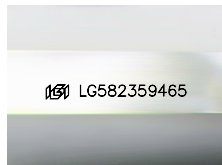
Polish VERY GOOD

Symmetry VERY GOOD

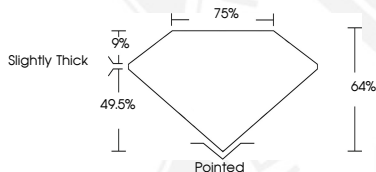
Fluorescence NONE

Inscription(s) LG582359465

Comments: As Grown - No indication of post-growth treatment. This Laboratory Grown Diamond was created by High Pressure High Temperature (HPHT) growth process.



Sample Image Used



**IGI LABORATORY GROWN  
DIAMOND ID REPORT**

May 31, 2023

IGI Report Number **LG582359465**

**CUT CORNERED RECTANGULAR  
MODIFIED BRILLIANT**

**5.49 X 4.11 X 2.63 MM**

Carat Weight 0.53 CARAT

Color Grade FANCY VIVID YELLOW

Clarity Grade VS 1

Polish VERY GOOD

Symmetry VERY GOOD

Fluorescence NONE

Inscription(s) LG582359465

Comments: As Grown - No indication of post-growth treatment. This Laboratory Grown Diamond was created by High Pressure High Temperature (HPHT) growth process.



THIS DOCUMENT WAS PRODUCED WITH THE FOLLOWING SECURITY MEASURES: SPECIAL DOCUMENT PAPER, INK SCREENS, WATERMARK, BACKGROUND DESIGN, HOLOGRAM AND OTHER SECURITY FEATURES NOT LISTED AND DO EXCEED DOCUMENT SECURITY INDUSTRY GUIDELINES.

For terms & conditions and to verify this report, please visit [www.igi.org](http://www.igi.org)