



**INTERNATIONAL
GEMOLOGICAL
INSTITUTE**

ELECTRONIC COPY

**LABORATORY GROWN
DIAMOND REPORT**

LG582360163

**IGI LABORATORY GROWN
DIAMOND ID REPORT**

June 1, 2023
IGI Report Number **LG582360163**
**CUT CORNERED RECTANGULAR
MODIFIED BRILLIANT**
5.74 X 4.40 X 2.85 MM
Carat Weight 0.65 CARAT
Color Grade FANCY VIVID
YELLOW
Clarity Grade VVS 1
Polish VERY GOOD
Symmetry VERY GOOD
Fluorescence NONE
Inscription(s) LG582360163

Comments: As Grown - No indication of post-growth treatment. This Laboratory Grown Diamond was created by High Pressure High Temperature (HPHT) growth process.

LABORATORY GROWN DIAMOND REPORT

IGI LABORATORY GROWN DIAMOND IDENTIFICATION REPORT

June 1, 2023
IGI Report Number LG582360163
Description LABORATORY GROWN DIAMOND
Shape and Cutting Style CUT CORNERED RECTANGULAR MODIFIED BRILLIANT
Measurements 5.74 X 4.40 X 2.85 MM

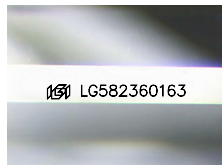
GRADING RESULTS

Carat Weight 0.65 CARAT
Color Grade FANCY VIVID YELLOW
Clarity Grade VVS 1

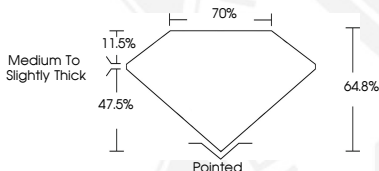
ADDITIONAL GRADING INFORMATION

Polish VERY GOOD
Symmetry VERY GOOD
Fluorescence NONE
Inscription(s) LG582360163

Comments: As Grown - No indication of post-growth treatment. This Laboratory Grown Diamond was created by High Pressure High Temperature (HPHT) growth process.



Sample Image Used



**IGI LABORATORY GROWN
DIAMOND ID REPORT**

June 1, 2023
IGI Report Number **LG582360163**
**CUT CORNERED RECTANGULAR
MODIFIED BRILLIANT**
5.74 X 4.40 X 2.85 MM
Carat Weight 0.65 CARAT
Color Grade FANCY VIVID
YELLOW
Clarity Grade VVS 1
Polish VERY GOOD
Symmetry VERY GOOD
Fluorescence NONE
Inscription(s) LG582360163

Comments: As Grown - No indication of post-growth treatment. This Laboratory Grown Diamond was created by High Pressure High Temperature (HPHT) growth process.

THIS DOCUMENT WAS PRODUCED WITH THE FOLLOWING SECURITY MEASURES: SPECIAL DOCUMENT PAPER, INK SCREENS, WATERMARK, BACKGROUND DESIGN, HOLOGRAM AND OTHER SECURITY FEATURES NOT LISTED AND DO EXCEED DOCUMENT SECURITY INDUSTRY GUIDELINES.

For terms & conditions and to verify this report, please visit www.igi.org