



# INTERNATIONAL GEMOLOGICAL INSTITUTE

ELECTRONIC COPY

## LABORATORY GROWN DIAMOND REPORT

LG582360358

### LABORATORY GROWN DIAMOND REPORT

#### IGI LABORATORY GROWN DIAMOND IDENTIFICATION REPORT

May 15, 2023  
IGI Report Number LG582360358  
Description LABORATORY GROWN DIAMOND  
Shape and Cutting Style ROUND BRILLIANT  
Measurements 5.12 - 5.14 X 3.14 MM

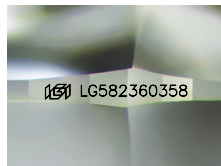
#### GRADING RESULTS

Carat Weight 0.51 CARAT  
Color Grade E  
Clarity Grade VS 1  
Cut Grade EXCELLENT

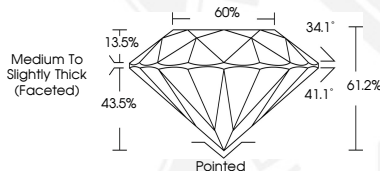
#### ADDITIONAL GRADING INFORMATION

Polish EXCELLENT  
Symmetry EXCELLENT  
Fluorescence NONE  
Inscription(s) IGI LG582360358

Comments: This Laboratory Grown Diamond was created by Chemical Vapor Deposition (CVD) growth process and may include post-growth treatment. Type IIa



Sample Image Used



#### IGI LABORATORY GROWN DIAMOND ID REPORT

May 15, 2023  
IGI Report Number LG582360358  
ROUND BRILLIANT  
5.12 - 5.14 X 3.14 MM  
Carat Weight 0.51 CARAT  
Color Grade E  
Clarity Grade VS 1  
Cut Grade EXCELLENT  
Polish EXCELLENT  
Symmetry EXCELLENT  
Fluorescence NONE  
Inscription(s) IGI LG582360358

Comments: This Laboratory Grown Diamond was created by Chemical Vapor Deposition (CVD) growth process and may include post-growth treatment. Type IIa

#### IGI LABORATORY GROWN DIAMOND ID REPORT

May 15, 2023  
IGI Report Number LG582360358  
ROUND BRILLIANT  
5.12 - 5.14 X 3.14 MM  
Carat Weight 0.51 CARAT  
Color Grade E  
Clarity Grade VS 1  
Cut Grade EXCELLENT  
Polish EXCELLENT  
Symmetry EXCELLENT  
Fluorescence NONE  
Inscription(s) IGI LG582360358

Comments: This Laboratory Grown Diamond was created by Chemical Vapor Deposition (CVD) growth process and may include post-growth treatment. Type IIa



THIS DOCUMENT WAS PRODUCED WITH THE FOLLOWING SECURITY MEASURES: SPECIAL DOCUMENT PAPER, INK SCREENS, WATERMARK, BACKGROUND DESIGN, HOLOGRAM AND OTHER SECURITY FEATURES NOT LISTED AND DO EXCEED DOCUMENT SECURITY INDUSTRY GUIDELINES.

For terms & conditions and to verify this report, please visit [www.igi.org](http://www.igi.org)