



**INTERNATIONAL  
GEMOLOGICAL  
INSTITUTE**

**ELECTRONIC COPY**

**LABORATORY GROWN DIAMOND REPORT**

May 12, 2023  
 IGI Report Number **LG582361750**  
 Description **LABORATORY GROWN  
DIAMOND**  
 Shape and Cutting Style **CUT CORNERED RECTANGULAR  
MODIFIED BRILLIANT**  
 Measurements **9.93 X 7.29 X 4.99 MM**

**GRADING RESULTS**

Carat Weight **3.50 CARATS**  
 Color Grade **H**  
 Clarity Grade **VS 1**

**ADDITIONAL GRADING INFORMATION**

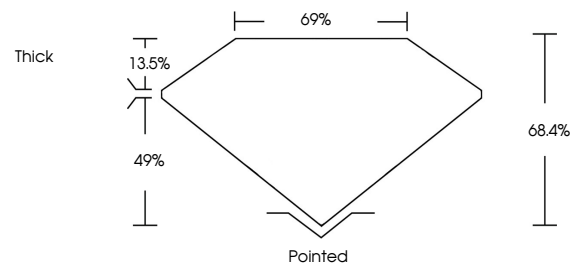
Polish **EXCELLENT**  
 Symmetry **EXCELLENT**  
 Fluorescence **NONE**  
 Inscription(s) **IGI LG582361750**

Comments: This Laboratory Grown Diamond was created by Chemical Vapor Deposition (CVD) growth process and may include post-growth treatment. Type IIa

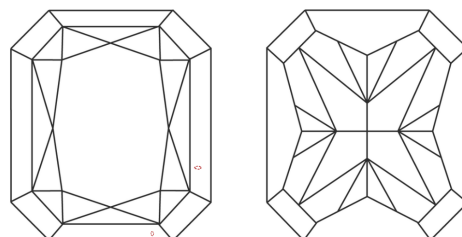
**LABORATORY GROWN DIAMOND REPORT**

**LG582361750**  
 Report verification at [igi.org](http://igi.org)

**PROPORTIONS**



**CLARITY CHARACTERISTICS**



**KEY TO SYMBOLS**

Red symbols indicate internal characteristics.  
 Green symbols indicate external characteristics.

**LABORATORY GROWN  
DIAMOND REPORT**

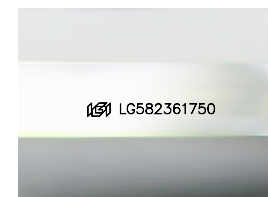
**GRADING SCALES**

**CLARITY**

| IF                  | VVS <sup>1-2</sup>          | VS <sup>1-2</sup>      | SI <sup>1-2</sup> | I <sup>1-3</sup> |
|---------------------|-----------------------------|------------------------|-------------------|------------------|
| Internally Flawless | Very Very Slightly Included | Very Slightly Included | Slightly Included | Included         |

**COLOR**

| D | E | F | G | H | I | J | Faint | Very Light | Light |
|---|---|---|---|---|---|---|-------|------------|-------|
|---|---|---|---|---|---|---|-------|------------|-------|



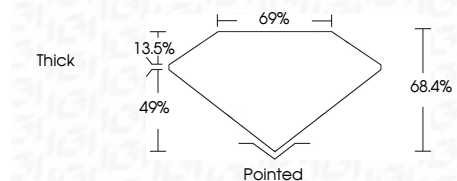
Sample Image Used

**LABORATORY GROWN DIAMOND REPORT**

May 12, 2023  
 IGI Report Number **LG582361750**  
 Description **LABORATORY GROWN  
DIAMOND**  
 Shape and Cutting Style **CUT CORNERED  
RECTANGULAR MODIFIED  
BRILLIANT**  
 Measurements **9.93 X 7.29 X 4.99 MM**

**GRADING RESULTS**

Carat Weight **3.50 CARATS**  
 Color Grade **H**  
 Clarity Grade **VS 1**



**ADDITIONAL GRADING INFORMATION**

Polish **EXCELLENT**  
 Symmetry **EXCELLENT**  
 Fluorescence **NONE**  
 Inscription(s) **IGI LG582361750**  
 Comments: This Laboratory Grown Diamond was created by Chemical Vapor Deposition (CVD) growth process and may include post-growth treatment. Type IIa



|              |                           |                                       |                       |             |        |          |              |                |       |         |           |           |      |                 |
|--------------|---------------------------|---------------------------------------|-----------------------|-------------|--------|----------|--------------|----------------|-------|---------|-----------|-----------|------|-----------------|
| May 12, 2023 | IGI Report No LG582361750 | CUT CORNERED RECT. MODIFIED BRILLIANT | 9.93 X 7.29 X 4.99 MM | 3.50 CARATS | H      | VS 1     | 68.4%        | 69%            | Thick | Pointed | EXCELLENT | EXCELLENT | NONE | IGI LG582361750 |
| Color Grade  | Clarity Grade             | Table                                 | Girdle                | Culet       | Polish | Symmetry | Fluorescence | Inscription(s) |       |         |           |           |      |                 |

Comments: This Laboratory Grown Diamond was created by Chemical Vapor Deposition (CVD) growth process and may include post-growth treatment. Type IIa