



**ELECTRONIC COPY**

**LABORATORY GROWN DIAMOND REPORT**

LG582385497

Report verification at [igi.org](http://igi.org)

**LABORATORY GROWN  
DIAMOND REPORT**

**LABORATORY GROWN DIAMOND REPORT**

**LABORATORY GROWN DIAMOND REPORT**

May 18, 2023  
IGI Report Number **LG582385497**  
Description **LABORATORY GROWN  
DIAMOND**  
Shape and Cutting Style **ROUND BRILLIANT**  
Measurements **10.88 - 10.95 X 6.58 MM**

**GRADING RESULTS**

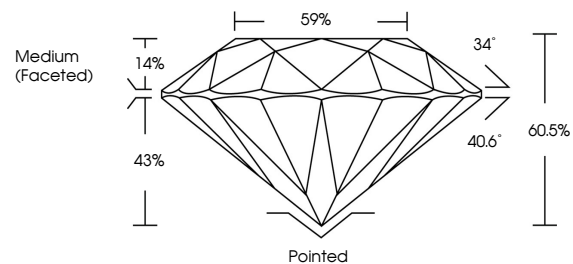
Carat Weight **4.81 CARATS**  
Color Grade **H**  
Clarity Grade **INTERNALLY FLAWLESS**  
Cut Grade **IDEAL**

**ADDITIONAL GRADING INFORMATION**

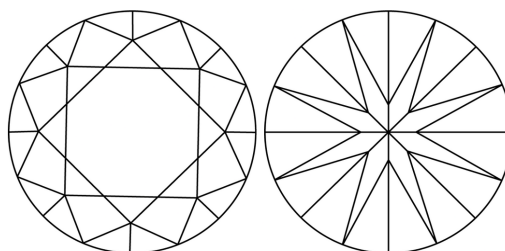
Polish **EXCELLENT**  
Symmetry **EXCELLENT**  
Fluorescence **NONE**  
Inscription(s) **LG582385497**

Comments: HEARTS & ARROWS  
As Grown - No indication of post-growth treatment.  
This Laboratory Grown Diamond was created by High Pressure High Temperature (HPHT) growth process.  
Type II  
Faint Blue

**PROPORTIONS**



**CLARITY CHARACTERISTICS**



**KEY TO SYMBOLS**

Red symbols indicate internal characteristics.  
Green symbols indicate external characteristics.



**GRADING SCALES**

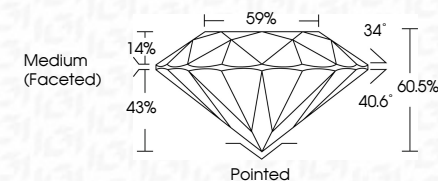
**CLARITY**

IF	VVS <sup>1-2</sup>	VS <sup>1-2</sup>	SI <sup>1-2</sup>	I <sup>1-3</sup>
Internally Flawless	Very Very Slightly Included	Very Slightly Included	Slightly Included	Included

**COLOR**

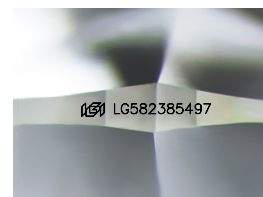
D	E	F	G	H	I	J	Faint	Very Light	Light

May 18, 2023  
IGI Report Number **LG582385497**  
Description **LABORATORY GROWN  
DIAMOND**  
Shape and Cutting Style **ROUND BRILLIANT**  
Measurements **10.88 - 10.95 X 6.58 MM**  
**GRADING RESULTS**  
Carat Weight **4.81 CARATS**  
Color Grade **H**  
Clarity Grade **INTERNALLY FLAWLESS**  
Cut Grade **IDEAL**



**ADDITIONAL GRADING INFORMATION**

Polish **EXCELLENT**  
Symmetry **EXCELLENT**  
Fluorescence **NONE**  
Inscription(s) **LG582385497**  
Comments: HEARTS & ARROWS  
As Grown - No indication of post-growth treatment.  
This Laboratory Grown Diamond was created by High Pressure High Temperature (HPHT) growth process.  
Type II  
Faint Blue



Sample Image Used



May 18, 2023	IGI Report No LG582385497	ROUND BRILLIANT	4.81 CARATS	H	IF	IDEAL	60.5%	59%	Medium (Faceted)	Pointed	EXCELLENT	EXCELLENT	NONE	IGI LG582385497
Carat Weight														
Color Grade														
Clarity Grade														
Depth														
Table														
Grade														
Culet														
Polish														
Symmetry														
Fluorescence														
Inscriptions(s)														
Comments: HEARTS & ARROWS														
As Grown - No indication of post-growth treatment.														
This Laboratory Grown Diamond was created by High Pressure High Temperature (HPHT) growth process.														
Type II														
Faint Blue														