



ELECTRONIC COPY

LABORATORY GROWN DIAMOND REPORT

LG582390954

Report verification at igi.org

LABORATORY GROWN DIAMOND REPORT

LABORATORY GROWN DIAMOND REPORT

LABORATORY GROWN DIAMOND REPORT

July 28, 2023
IGI Report Number LG582390954
Description LABORATORY GROWN DIAMOND
Shape and Cutting Style ROUND BRILLIANT
Measurements 9.59 - 9.64 X 5.84 MM

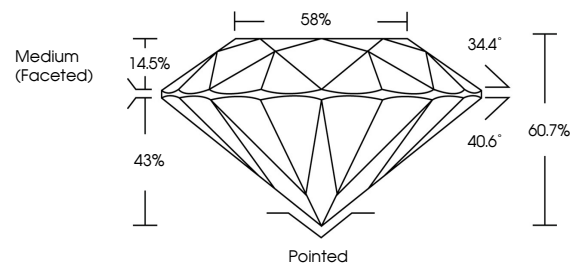
GRADING RESULTS

Carat Weight 3.32 CARATS
Color Grade H
Clarity Grade VS 1
Cut Grade IDEAL

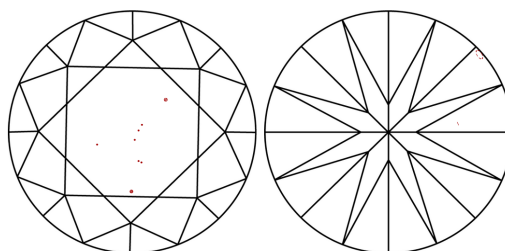
ADDITIONAL GRADING INFORMATION

Polish EXCELLENT
Symmetry EXCELLENT
Fluorescence NONE
Inscription(s) IGI LG582390954

PROPORTIONS



CLARITY CHARACTERISTICS



KEY TO SYMBOLS

Red symbols indicate internal characteristics.
Green symbols indicate external characteristics.

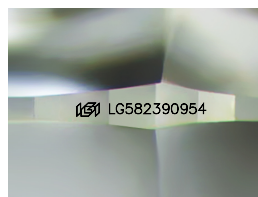
GRADING SCALES

CLARITY

Table with 5 columns: IF, VVS 1-2, VS 1-2, SI 1-2, I 1-3. Row 1: Internally Flawless, Very Very Slightly Included, Very Slightly Included, Slightly Included, Included.

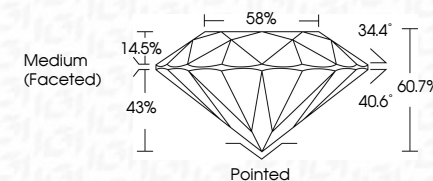
COLOR

Table with 10 columns: D, E, F, G, H, I, J, Faint, Very Light, Light.



Sample Image Used

July 28, 2023
IGI Report Number LG582390954
Description LABORATORY GROWN DIAMOND
Shape and Cutting Style ROUND BRILLIANT
Measurements 9.59 - 9.64 X 5.84 MM
GRADING RESULTS
Carat Weight 3.32 CARATS
Color Grade H
Clarity Grade VS 1
Cut Grade IDEAL



ADDITIONAL GRADING INFORMATION

Polish EXCELLENT
Symmetry EXCELLENT
Fluorescence NONE
Inscription(s) IGI LG582390954



IGI

July 28, 2023
IGI Report No LG582390954
ROUND BRILLIANT
9.59 - 9.64 X 5.84 MM
3.32 CARATS H
Color Grade VS 1 IDEAL
Clarity Grade 60.7% 58%
Depth Table Girdle
Medium (Faceted)
Pointed EXCELLENT EXCELLENT NONE
IGI LG582390954