



**INTERNATIONAL
GEMOLOGICAL
INSTITUTE**

ELECTRONIC COPY

**LABORATORY GROWN
DIAMOND REPORT**

LG582391759

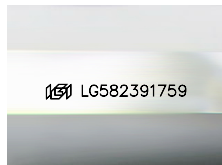
**IGI LABORATORY GROWN
DIAMOND ID REPORT**

August 9, 2023
IGI Report Number **LG582391759**
PRINCESS CUT
5.14 X 5.04 X 3.44 MM
Carat Weight 0.77 CARAT
Color Grade G
Clarity Grade VVS 2
Polish VERY GOOD
Symmetry EXCELLENT
Fluorescence NONE
Inscription(s) LG582391759

LABORATORY GROWN DIAMOND REPORT

IGI LABORATORY GROWN DIAMOND IDENTIFICATION REPORT

August 9, 2023
IGI Report Number LG582391759
Description LABORATORY GROWN DIAMOND
Shape and Cutting Style PRINCESS CUT
Measurements 5.14 X 5.04 X 3.44 MM



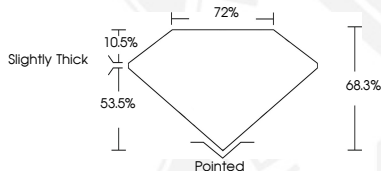
Sample Image Used

GRADING RESULTS

Carat Weight 0.77 CARAT
Color Grade G
Clarity Grade VVS 2

ADDITIONAL GRADING INFORMATION

Polish VERY GOOD
Symmetry EXCELLENT
Fluorescence NONE
Inscription(s) LG582391759



**IGI LABORATORY GROWN
DIAMOND ID REPORT**

August 9, 2023
IGI Report Number **LG582391759**
PRINCESS CUT
5.14 X 5.04 X 3.44 MM
Carat Weight 0.77 CARAT
Color Grade G
Clarity Grade VVS 2
Polish VERY GOOD
Symmetry EXCELLENT
Fluorescence NONE
Inscription(s) LG582391759



THIS DOCUMENT WAS PRODUCED WITH THE FOLLOWING SECURITY MEASURES: SPECIAL DOCUMENT PAPER, INK SCREENS, WATERMARK, BACKGROUND DESIGN, HOLOGRAM AND OTHER SECURITY FEATURES NOT LISTED AND DO EXCEED DOCUMENT SECURITY INDUSTRY GUIDELINES.

For terms & conditions and to verify this report, please visit www.igi.org